



Fulfilling Our Promise...

 **Cancer Center**
OF SANTA BARBARA with **sansum** CLINIC

CANCER  FOUNDATION
of SANTA BARBARA

Contents

It Takes a Village...	1
Cancer Center Highlights	3
Patients at a Glance	3
New Cancer Center Building	4
Cancer Foundation Highlights	5
Radiation Oncology <i>Eldon Eads' Story</i>	6
Medical Oncology & Hematology <i>Linda Shaver-Gleason's Story</i>	7
Nuclear Medicine <i>Bill Hahn's Story</i>	8
Solvang Oncology & Lompoc Oncology <i>Bill Brennan's Story</i>	9
Clinical Research <i>David Rosenthal's Story</i>	10
Oncology Social Work <i>Jim & Blanca Bolton's Story</i>	11
Oncology Support Programs <i>Cindy Stoutenborough's Story</i>	12
Patient Navigation <i>Jan Martin Winn's Story</i>	13
Genetic Counseling <i>Patricia Marek's Story</i>	14
Prevention, Education & Outreach <i>Promotores' Story</i>	15
Our Physicians	16
Annual Events	18
Funds Raised by CFSB in 2016	19
Grants Made by CFSB in 2016	19
Volunteer Spotlight – Fritz Olenberger	19
Stepanek Legacy Society	20
Named Endowment Funds	20
Lifetime Donors	21
Campaign Donors	22
Donor Acknowledgement	24
CFSB Staff & Trustees	32
New Cancer Center Brand	33



Left to right: Kurt Ransohoff, MD, Chad Hine, Vicki Hazard, Matthew Kunkel, Rick Scott and Frank Foster

It Takes A Village...

In 2016, hundreds of dedicated individuals worked toward a shared vision of enhanced cancer care in Santa Barbara. From architects and philanthropists to physicians and steel workers, we have witnessed first hand that it takes a village to turn a decade-long dream of a new regional Cancer Center into reality.

By year end, our **new comprehensive Cancer Center** was more than halfway complete. What was 3-acres of dirt and rock 15 months ago has blossomed into an iconic structure with radiation treatment vaults and foundations poured, steel beams welded and walls and windows intact. G.L. Bruno Associates has kept the project on time and budget, and when the final beam was placed in August, the **Campaign for Our New Cancer Center** launched to the public. **Lady Leslie Ridley-Tree** generously increased her gift from \$8.23 million to **\$10.73 million** to name the institution, and we received a year-end pledge of **\$4 million from Virgil Elings, PhD** to name the main building. Thanks to Lady Leslie Ridley-Tree, Virgil Elings and support from hundreds of others, by year end we had raised **\$38 million** toward the \$53 million cost of construction.

While the new regional Cancer Center took shape, our dedicated medical team continued providing care to **9,924 patients in 2016**. Throughout the year, all departments continued to be actively involved in planning for the new building, including space design and equipment acquisition. We hired two medical oncologists, **Ryan Kendle, MD** and **Novejot (Neetu) Sekhon, MD**, along with a new VP of Oncology, **Matthew Kunkel, MHA** from Stanford Health.

The Cancer Foundation of Santa Barbara in partnership with **Sansum Clinic** raised **\$15.4 million** in gifts and pledges in 2016. During the year, the Cancer Foundation provided **\$15.8 million to fund construction expenses** for the new center and **granted \$2.8 million** to the Cancer Center of Santa Barbara to underwrite a wide array of programs, equipment and services including financial aid, research, genetic counseling and wellness programs. Additionally, **\$168,245** was granted to support other cancer-related programs at **Santa Barbara Neighborhood Clinics, UCSB, Cottage Health** and the **Teddy Bear Cancer Foundation**.

The Cancer Center and the patients and families we serve are fortunate to be the beneficiaries of such rare and exceptional generosity. We continue to look to the community for support to complete this landmark project. We owe a debt of gratitude to our “village” – our trustees, donors, volunteers, physicians, staff and patients. Thank you for helping us ensure the finest quality cancer care is available for all patients in our community, a level of care of which we can all be proud. ■



Rick Scott
President
Cancer Foundation
of Santa Barbara



Kurt N. Ransohoff, MD, FACP
CEO and Chief Medical Officer
Sansum Clinic



Chad Hine
Chief Operating Officer
Sansum Clinic



Matthew Kunkel, MHA
Vice President
Oncology Services
Cancer Center of Santa Barbara



Frank Foster
Board Chair
Cancer Foundation
of Santa Barbara



Vicki Hazard
Board Chair
Sansum Clinic





Placing the final beam during the Topping Off Ceremony at the new Cancer Center. This group of steel workers was among the many generous donors to the new Cancer Center.

The **Campaign for Our New Cancer Center** launched publically on August 19, 2016 with **\$33 million raised** toward the \$53 million cost of our new, state-of-the-art Cancer Center. We received gifts and pledges from hundreds of donors, including a **\$4 million gift from Virgil Elings, PhD** and **\$10.73 million from campaign chair Lady Leslie Ridley-Tree.**

In 2016, the Cancer Center welcomed the new VP of Oncology Services, **Matthew Kunkel, MHA**, along with two new medical oncologists, **Ryan Kendle, MD** and **Novejot (Neetu) Sekhon, MD.**

Tom Woliver, MD retired after 33 years of practice at the Cancer Center in Santa Barbara and decided to continue providing care in his retirement to our Medical Oncology patients in Solvang and Lompoc.

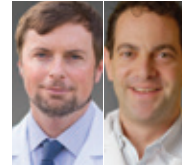
In 2016 **Shane Cotter, MD, PhD** and **Daniel Greenwald, MD** charted a new path for the expansion of cancer research in our community.

A new partnership was developed with **Santa Barbara Neighborhood Clinics** and the **Santa Barbara County Public Health Department** to achieve a greater number of cancer screenings and overall prevention for our local residents.

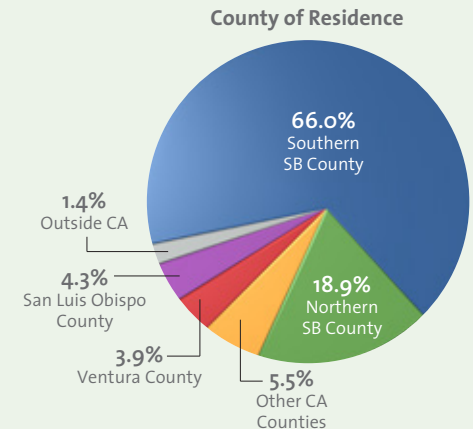
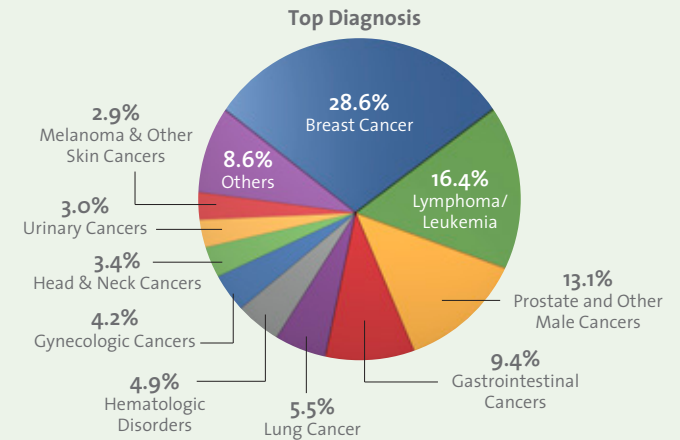
In 2016 the Cancer Center provided **\$2,076,937 worth of free or subsidized care** for less fortunate patients.

To accommodate a continued increase in patients in Santa Ynez Valley, the Cancer Center **completed the expansion and remodel of Solvang Oncology.**

The Genetic Counseling Department experienced a **14% increase in patients.**



9,924 Unique cancer patients treated
66,855 Visits to our Oncology departments
68 Average age



New Cancer Center Building

Construction Update

The project remains on time and on budget. Significant milestones include: opening of the parking structure, completion of the foundation, steel frame, exterior and interior walls and delivery of two new linear accelerators. The pad for the **Wolf Education and Training Center** was graded in April 2017, and the new Center is scheduled to open in September 2017 as the **Ridley-Tree Cancer Center** in honor of **Lady Leslie Ridley-Tree's** leadership role and generous support.



Campaign Update

As of May 1, 2017, the campaign has received gifts and pledges of more than **\$46 million** toward the **\$53 million** cost of the new center.

With less than 8 months remaining in the Campaign, we continue to invite the community to join us in supporting this life-saving facility. Naming opportunities ranging from \$2,500 to \$2 million are available and start for as little as \$42 per month. To learn more, contact **Rob Dunton** at (805) 898-3620.



Major Campaign Donors (\$1 million +)

\$10,000,000+

Lady Leslie Ridley-Tree

\$5,000,000 - \$9,999,999

Cancer Foundation of Santa Barbara

\$2,500,000 - \$4,999,999

Cottage Health

Virgil Elings, PhD

The Wolf Family Foundation

\$1,000,000 - \$2,499,999

Roger K. Bower

Jim & Wendy Drasdo

Hugh & Hunter Foster Family

Anna & David Grotenhuis

Judy & Jeff Henley

Morrie & Irma Jurkowitz

William & Nancy Kimsey

Shirley & Seymour Lehrer

Lillian Lovelace

Dr. Nancy O'Reilly & Daughters
Lauren, Leigh & Ragan

Sansum Clinic

Maryan Schall

Elaine Stepanek Foundation, Trust & Estate

See list of all campaign donors on page 22
(through April 2017).



Funded **\$15,751,871** in construction expenses for the new Cancer Center.



Working with Sansum Clinic, the Cancer Foundation raised a record **\$9,410,867** in cash plus **\$5,950,054** in pledges for a total of **\$15,360,921** in 2016.



Granted **\$168,245** to support a wide range of cancer-related programs in Santa Barbara County, including: underwriting pediatric cancer research at **Cottage Hospital**, supporting **Camp Kesem for children** whose parents are fighting cancer, funding research at **UCSB** on Adipose Stem Cells (ASCs) – a promising future in cancer treatment – and supporting a family resource specialist at **Teddy Bear Cancer Foundation** for families with children with cancer.



Granted **\$2,265,954** to the Cancer Center of Santa Barbara with Sansum Clinic to underwrite **financial aid, research, genetics** and other **social and wellness programs**.



Hosted the **16th Barbara Ireland Walk for Breast Cancer**, the **26th Viva la Vida**, and the **24th Cancer Center Walk/Run**. These events raised more than **\$250,000** for cancer programs at the Cancer Center, while attracting thousands of participants.



Five new Trustees joined the CFSB board in 2016: **Brier Turpin Allebrand, David Grotenhuis, Julie Henley, Priscilla Higgins, PhD** in 2016, and **Charlie Petersen** in 2017. Additionally, **Lori Willis**, Major Gifts Officer, joined the CFSB staff.



Cancer Foundation Board of Trustees

Left to Right: Sue Birch, C. Michael Cooney, Jim Jackson, Val Montgomery, Shane Cotter, MD, PhD, David Grotenhuis, Art Merovick, Gene Miller, Charlie Petersen, Vicki Hazard, Steve McHugh, Kim Schizas, Hugh Boss, Brier Turpin Allebrand, Rick Scott, Tom Weisenburger, MD, Fred Kass, MD (not present: Les Charles, Frank Foster, Julie Henley, Priscilla Higgins, Tim Metzinger, Joel Rothman, PhD)

Radiation Oncology



As the premier provider of **Radiation Oncology** in Santa Barbara County, the Cancer Center is proud to provide the latest treatments available, including stereotactic radiosurgery, brachytherapy and external beam radiation therapy. Our radiation oncologists are board certified and have received extensive training from world renowned institutions.

2016 Highlights

In 2016, The Radiation Oncology Department spent a significant amount of time shaping the department to meet the strict guidelines set by ASTRO (American Society of Radiation Oncology) for APEX accreditation, with a goal to be one of the early accredited centers by spring of 2017.

1,352
unique patients
+13.1%*

26,175
total visits to
Radiation Oncology
+11.3%*

*Percentage increase of patients treated from previous year.



Eldon Eads with Beverly Toole, RN, OCN, Nurse Manager

“The people at the Cancer Center are such a special group, you can’t help but be a winner coming out of here.”

When Eldon Eads rang the Radiation Oncology Department’s bell signaling the end of his treatments, his nurses, radiation therapist and the friends he acquired over his many appointments stood right alongside him, tossing handfuls of confetti. Nurse manager Beverly Toole, RN, OCN tightly hugged her patient she happily calls, “Mr. Sunshine.” Their mutual admiration started when Beverly learned of their common southern roots and heard his familiar accent. “He comes in and greets me with a ‘Hello, Miss Kentucky’ and I greet him back with a ‘Well hello, Mr. Tennessee,’” she recalls. “I’m going to miss him.”

The 79 year-old describes the bell ringing ceremony as “bittersweet” since he’s come to know and love so many of the staff members who gathered to say goodbye. He can handily tick off a long list of their names, including his therapists Martha Harris-Hemming and Rafael Ruiz who Eldon insisted get the first bite of food he brought to celebrate. The presence of so many familiar faces moved him to tears. “I do cry easily, so when I rang that bell, I just didn’t have enough words,” Eldon admits.

In 2016, urologist Dr. Alex Koper and radiation oncologist Dr. Lindsay Blount sat down with Eldon and his wife, Cricket, to discuss his prostate cancer diagnosis.

Eldon took the news in stride. “I feel very blessed that I’ve been healthy for most of my 79 years, but sometimes age catches up with you”.

The couple rented out their home in Keene, a small foothill town between Bakersfield and Tehachapi, so they could be closer to the Cancer Center when Eldon’s radiation began. Confidence in their care and doctors made it an easy decision, after years of driving to Santa Barbara for regular checkups.

Their son, Craig, set up an RV for his parents in Pismo Beach so they could be close to their daughter, Chris, and only 90 minutes from Eldon’s medical team. He

admits the idea of radiation unnerved him at first, but all the therapists and nurses built up his trust. “It’s such a high tech thing but they are so understanding and it’s great to have the confidence that you get from the Cancer Center staff,” he says.

Eldon completed his radiation treatments in early 2017, but he still returns for routine follow-ups with Dr. Blount. It’s a chance for him to visit the Cancer Center’s Radiation Oncology Department, a place he credits with pulling him through a challenging time. “The people at the Cancer Center are such a special group, you can’t help but be a winner coming out of here.” ■

Top 10 Diagnoses

30.9%
Breast Cancer

24.6%
Prostate & Other
Male Cancers

8.9%
Head & Neck
Cancers

7.4%
Gastrointestinal
Cancers

7.2%
Lung Cancer

4.4%
Gynecological
Cancers

3.7%
Lymphoma/Leukemia

2.8%
Central Nervous
System Tumors

2.1%
Melanoma

8.0%
Others

Top 10 Diagnoses

31.3%	18.0%	10.0%	9.0%	6.0%	5.6%	3.9%	3.0%	2.0%	11.2%
Breast Cancer	Lymphoma/ Leukemia	Gastrointestinal Cancers	Prostate & Other Male Cancers	Hematologic Disorders	Lung Cancer	Gynecologic Cancers	Multiple Myeloma	Head & Neck Cancers	Others

“It all just fell apart,” is how **Linda Shaver-Gleason** describes life in 2015 when she learned she had stage 4 breast cancer. The wife and mother of a one-year-old son had nearly completed her PhD in musicology at the University of California Santa Barbara. She guessed that a lump in her breast was a plugged milk duct and assumed terrible back pain stemmed from the strain of carrying her toddler, Linus. When the discomfort became too much to bear, she relented to undergo an MRI. That imaging revealed a cancerous mass in her right breast which had crept into her spine and pelvis. A lengthy hospitalization sent her world spiraling.

“I lost three inches in height because it mangled my spine,” recounts the 33 year-old. “I was in a back brace for months re-learning how to walk.”

Linda immediately connected with oncologist **Dr. Juliet Penn** at the Cancer Center’s Solvang Office. “She has kids so we bonded over motherhood stuff,” says Linda. The two began a race to rid Linda’s body of the cancer and remove it from her bones. Once one type of chemotherapy ran its course, they switched to another. When Dr. Penn believed an ovarian cancer drug held promise to battle Linda’s breast cancer, she argued her patient’s case with the

insurance company and won. “Dr. Penn truly is my advocate and has gone to bat for me,” Linda explains. “She always told me straight what was going on. She looked me in the eye and said this is stage 4. You will never not have cancer, but we are here to make sure you live as long as you can.” Dr. Penn is equally enamored with Linda’s courage. “She is absolutely my hero,” says the physician. “She faces the ongoing losses associated with metastatic cancer with real bravery. She never feels sorry for herself but always asks, ‘What do we need to do now?’”

The young mom received her diploma in June 2016. While the effects of the

chemotherapy made an academic teaching position impossible, she composes scholarly articles for textbooks, speaks at conferences around the country and writes a blog to keep her hand in her field of study. Linda did have to surrender her lifetime love of playing the viola, her instrument since age 9 and the focus of her Master of Music degree. “With the viola, position and posture is important, and right now, everything feels wrong.” She does find comfort listening to music with her son and her husband, Chris. They are both grateful to Dr. Penn for giving them more days together with Linus. “I am getting stronger every day, and I am so glad to be present in his life.” ■

“Dr. Penn truly is my advocate and has gone to bat for me.”



Linda Shaver-Gleason with Dr. Juliet Penn



Medical Oncology

The **Medical Oncology** Department delivers chemotherapy, biologic therapies, immunotherapy and supportive treatments for cancer patients. Cancer Center medical oncologists have been trained at the country’s leading cancer programs and they collaborate with other oncologists and physicians to provide a comprehensive and individualized approach to cancer care.

2016 Highlights

In 2016, **Ryan Kendle, MD** and **Novejot (Neetu) Sekhon, MD** joined the Medical Oncology staff. The department was highly involved in leadership roles, including **Dan Greenwald, MD** continuing his leadership of a Tumor Board, **Fred Kass, MD** taking on the role as chair of the Santa Barbara Breast Care Alliance and **Mukul Gupta, MD** providing leadership for Cottage Health’s One EMR efforts.

6,843
unique patients
+5.6%*

40,680
total visits to Medical
Oncology & Hematology
+5.4%*

*Percentage increase of patients treated from previous year.



Nuclear Medicine plays a critical role in cancer diagnosis and treatment by capturing images that deliver vital information about the function of cells and major organs. This involves the use of radioactive materials to create images of organs and study their functions.

2016 Highlights

In 2016, Nuclear Medicine performed more than 1,600 PET/CT scans and experienced an increase in utilization of the Philips Brightview XCT SPECT/CT system to optimize the characterization of tumors. The department integrated new technology including D-SPECT cardiac system and MEDRAD Intego infusion system.

3,988
unique patients

7,729
total visits to
Nuclear Medicine

“Dr. Pace told me everything just like it was. So I said, ‘why not go for it? I’m going to go forward.’”



Bill Hahn with
Bill Pace, MD

Bill Hahn developed a certain calmness from growing his Ventura auto repair business for nearly 50 years. He worked hard to build long-term relationships with his customers and learned to avoid drama when car troubles didn’t turn out as expected. The 72 year-old approaches his prostate cancer with the same accepting attitude. “Many people ask me, ‘are you mad about this?’” relays Bill. “I say ‘no, this is just what life is.’”

The prostate cancer that Bill uncovered back in 2001 spread into his bones. Over the next few years, he tried a litany of treatments from immunotherapy to

chemotherapy, which left him horribly sick. Even radiation couldn’t relieve the pain from the tumors, which by the fall of 2016 had immobilized his leg.

Dr. Bill Pace, Director of the center’s Nuclear Medicine Department, recommended Xofigo®, a course of radiopharmaceutical injections given to patients with prostate cancer that has spread to the bones. The drug delivers radiation directly to the bone, without damaging the bone marrow. Dr. Pace predicted little to no side effects and much less discomfort. Frank jumped at the chance to try this new treatment and he immediately connected with Dr. Pace, calling him a ‘straight-shooter.’ “Dr. Pace

told me everything just like it was. So I said, ‘why not go for it? I’m going to go forward,’” he explains. “Then I asked him if I would glow in the dark afterwards and he said no such luck,” chuckles Bill. By the third injection, he could walk again. “Dr. Pace said I would get stronger and I did,” he exclaims. “I thought, ‘Bingo! They zapped it.’”

Xofigo® often increases life expectancy. Bill is still cautious about his chances. “The cancer will probably get me at some point because it moves around, but all this has given me a different perspective,” he concludes. “It’s made me respect life and take advantage of opportunities that come my way.” The

life he lives today may still involve chemo pills and some treatable back pain, but he’s mobile again and determined to spend more time with his wife of 40 years, Michelle, his four children and eleven grandchildren. Whether at their Santa Paula home or all gathered at the family cabin in Donner, CA, Bill prefers to view it as closeness instead of chaos. “I would tell other patients considering this treatment to look at it like any other medicine you may need to get better. I am happy I did just that,” he advises. “If you have patience, it will happen.” ■

Top 10 Diagnoses

22.0%
Breast Cancer

15.4%
Prostate & Other
Male Cancers

11.2%
Lymphoma/
Leukemia

10.7%
Gastrointestinal
Cancers

9.8%
Lung Cancer

7.0%
Endocrine Tumors

5.7%
Head & Neck
Cancers

5.4%
Melanoma

3.8%
Gynecologic
Cancers

3.3%
Urinary Cancers

5.7%
Others

Communities Supported at our Solvang and Lompoc Offices

43%
Lompoc

21%
Solvang

11%
Santa Ynez

10%
Buellton

5%
Santa Maria

3%
Los Olivos

7%
Others

Walking across the parking lot to deliver a blood sample to the lab next door is no hassle for the staff of the Solvang Multi-Specialty Clinic & Cancer Center. To **Bill Brennan**, it shows that the staff there go the extra mile to move things along for their patients. *“Half the time at medical offices, you are a number,”* says the 69 year-old. *“Here it seems more personal. They bend over backwards for you.”* Bill is extremely appreciative that he could receive treatment for his rare neuroendocrine cancer in Santa Ynez Valley, avoiding a

lengthy drive from his home in Lompoc without sacrificing quality of care. The Solvang staff put Bill at ease and scheduled his first appointment within a day after he first rang. *“I can’t say enough about the care I am getting here, from the receptionist to the scheduler and medical assistants and on down the line,”* he gushes. *“It’s incredible. They’re all wonderful.”*

As a retiree relying on Social Security and Medicare, Bill especially appreciated when office manager **Mary Fox** investigated grants to pay for Opdivo®, a necessary but expensive drug that stimulates the

body’s immune system so it can fight cancer cells. *“She went straight to Bristol-Myers Squibb and filled out an application for me,”* he explains. *“Now they are giving me the drug free for a year. I am really emotional about this. I’ve thanked them and I will do it again and again.”* Mary’s reminder phone calls and the infusion nurses’ hugs are small gestures that make Bill feel like family. *“You have a lot to think about when you are in this situation. They are special - because I know it’s got to be a tough job.”*

After months of terrible nausea,

immunotherapy gave Bill a new lease on life. He’s eating, gaining weight and feels well enough to tackle yard work with his wife, Sara. The garden is a special place for the couple. They met at a nursery in Washington state and Bill worked part-time in a Home Depot plant department before his cancer worsened. Without his team at the Solvang center, Bill says his return to the outdoors may not have happened. *“For a small community, we are really lucky to have this kind of quality healthcare locally,”* he admits. *“It’s a true blessing.”* ■

“I can’t say enough about the care I am getting here, from the receptionist to the scheduler and medical assistants and on down the line. It’s incredible. They’re all wonderful.”



Bill Brennan with Mary Fox, Solvang Office Manager



The Cancer Center’s Solvang and Lompoc offices offer medical oncology and supportive care services close to home for those living in Santa Ynez Valley and areas further north.

2016 Highlights

In 2016, the Solvang office completed an expansion and remodeling project to support the overall increase in patients and staff. Patient access to Supportive Care programs such as Oncology Social Work, Genetic Counseling and Oncology Nutrition increased with several staff expanding their practice to the Santa Ynez Valley.

Solvang Oncology

868

unique patients
+4.0%*

6,787

total visits to
Solvang Oncology
+8.6%*

Lompoc Oncology

270

unique patients

574

total visits to
Lompoc Oncology

*Percentage increase of patients treated from previous year.



Clinical Research leads to the development of improved treatments and advancements in oncology care that result in a better future for all cancer patients.

2016 Highlights

Each of the thousands of new cancer cases that come through the Cancer Center is reviewed for consideration for a trial. In 2016, 46 new patients were enrolled in clinical trials and 62 patients previously enrolled continued to be followed.

CANCER FOUNDATION
OF SANTA BARBARA

The Cancer Foundation contributed

\$223,396

to support research and clinical trials in 2016.



David Rosenthal

“They are a team. You get the immediate feeling of how much they care for you.”

David Rosenthal listened intently when his oncologist **Dr. Jonathan Berkowitz** recommended something out of the ordinary to rid his body of lymphoma. The 76 year-old spent much of his life energized by changing things up, whether moving to a different part of the country or pursuing an entirely new career path. So when his doctors suggested the cancer-fighting drugs Rituxan® and Revlimid® as part of a clinical trial, he wholeheartedly agreed. Dr. Berkowitz and **Christine Yi**, David’s clinical research coordinator, left him feeling hopeful. “They are a team. You get

the immediate feeling of how much they care for you,” he explains. “They always greet me with a smile on their face. They are not talking around you, they are talking to you. You just feel cared for.”

David’s trial is one of 26 active studies currently followed by the Cancer Center’s Clinical Research Department. Staff members closely monitor each person’s progress and constantly review other studies from around the world that could offer lifesaving results for their patients. David raves about the care and attention he received, but nothing could beat Dr. Berkowitz’s announcement after part

one of his trial was complete. “He used the word ‘remission’ for the first time,” beams David. “It felt like a giant weight off my shoulders.” Initially, his diagnosis plagued him, but David relied on the same inner confidence, living without regrets, to pull himself out of the fog. He approached the trial the same way. “When I look at all I have done in my life, I don’t say I wish I could have done this or that,” he notes. “When I look back, I am pretty satisfied. I have done some crazy things.” That includes pivoting from a social work career at age 55 to becoming a mounted police officer because of his lifetime love

of horses. His equine interests drew him to the Central Coast. It was love at first sight the moment he spied the Santa Ynez Valley. “I borrowed a car, drove over route 154 and that was when I saw Nirvana in front of me,” he describes. David is well enough to tend to his beloved horses and hit the saddle once a week at a therapeutic riding program for veterans. He’s thankful his medical choices let him take the reins of his life back. “I feel fortunate to be here in the Santa Barbara area because of these kinds of programs,” he remarks. “The staff at the Cancer Center are a phenomenal group of people.” ■

Top Cancer Types in Trials

29%
Breast Cancer

23%
Chronic Lymphocytic Leukemia

8%
Lung Cancer

8%
Ovarian Cancer

8%
Esophageal Cancer

8%
Pancreatic Cancer

6%
Lymphoma

10%
Others

Financial Assistance Provided

\$2,076,937

for free or subsidized care

\$1,263,909

for free medications

\$490,908

in grants from outside agencies
for co-pay assistance

\$87,853

in grants from outside agencies
for gas and living expenses

In the cancer booklet **Jim Bolton's** doctor gave him, he found the recommendation to lower stress true but incredibly ironic. "Obvious advice, but difficult in reality," thought Jim, "if you are battling Hodgkin's lymphoma with few resources to pay for it."

Over the last 18 months, Jim and his wife, Blanca felt a little on overload. He suffered a heart attack. She battled breast cancer and underwent radiation. Blanca's father passed away and the couple began to care for her elderly

mother. Jim learned he had cancer and would later require chemotherapy. "I felt like we needed a secretary to keep all of our medical appointments straight," jokes the 63 year-old. His dry sense of humor often masks the strain caused by a mountain of medical expenses. Jim's Social Security benefits and income from Blanca's job as an ESL instructor would barely make a dent. They turned to **Mary Solis, LCSW**, an oncology social worker with over 30 years at the Cancer Center, who helped them learn about funds to

relieve some of the financial burden. She untangled the maze of insurance coverage and offered wisdom on how and when to apply for aid. For Jim, it almost seemed too good to be true. "I am more of a realist than Blanca" he confesses. "It's easy to say 'We'll take care of it, don't worry.' It's another to actually do it. I am dubious about stuff like that." Ultimately, Jim discovered Mary's promises were true. "If it wasn't for **Mary Solis and the Patient Assistance Program**, I don't know what we would

have done. I probably would not have gone through the chemo," admits Jim. "It was a godsend. Not getting a bill every day, for this or that, it's a major weight off our shoulders." For Blanca, it's a gift to concentrate on their health instead of worrying about debt. They greatly value their friendship with Mary and their connection to the Cancer Center. "It feels like a family. We are in good hands and they are in our corner advocating for us. There have been a lot of miracles and this is one of them," she says. ■

*"If it wasn't for **Mary Solis** and the Patient Assistance Program, I don't know what we would have done."*

Mary Solis, LCSW
Oncology Social Worker

Number of Patients & Families Receiving Financial Assistance

671

unique patients received financial assistance

223

unique patients receiving assistance with health insurance coverage

1,721

unique patients served by the Cancer Center's Social Work team



The Cancer Center's **Social Work** team is dedicated to helping patients with psychological, social and financial stresses associated with the diagnosis and treatment of cancer. This includes counseling, case management, support groups, assistance with home care and long-term care, insurance, transportation, finances and advocacy.

2016 Highlights

In 2016, the Social Work Department added a new Support Group Facilitator, two new Social Workers, and trained all staff in Cognitive Behavioral treatment modalities to help patients with cancer-related anxiety, depression, fatigue and insomnia.

CANCER FOUNDATION
OF SANTA BARBARA

The Cancer Foundation contributed

\$543,323

to fund social work services in 2016.

\$182,962

to support patient assistance/charity care in 2016.

Oncology Social Work
Financial & Logistical Assistance & Support Programs

Oncology Support Programs



Clinical Oncology Support Programs are a vital aspect of patient care to optimize quality of life and treatment effectiveness. We are proud to provide a wide array of programs including Oncology Nutrition, Wellness Programs and the Cancer Resource Library to help patients from treatment through survivorship.

2016 Oncology Nutrition Highlights

Our resident nutrition experts are Registered Dietitian Nutritionists (RDN) with specialized training in oncology. In 2016, our RDN's facilitated **2,622 patient contacts** including individual counsel on nutrition and the monthly Oncology Nutrition Education Series – covering different nutrition topics and research.

2016 Wellness Highlights

In 2016, the Cancer Center launched new Wellness Programs including **Practices in Stress Management, Infusion Room Massage Therapy**, and a third exercise program, **Strength After Breast Cancer** – providing education and training for those at risk of developing lymphedema.

“It was very comforting having somebody watch me carefully and notice when things needed to be adjusted.”



Cindy Stoutenborough

Last summer, 55 year-old **Cindy Stoutenborough** discovered a small lump underneath her jaw. She suspected an ear infection until her lower lip went numb. *“It kind of felt like I had been to the dentist,”* explains Cindy. A CAT scan revealed a tumor in her parotid gland, a salivary gland located in front of the ear behind the jaw bone. The tumor impacted the facial nerve connected to her lip. Within a month, Cindy's surgeon removed as much of the tumor as possible and recommended radiation and chemotherapy. *“I went into all of this without worrying for some reason,”* admits Cindy. *“I can't explain why. I think I tend to be one of those people who believes it's going to end for*

the better.” What also may have helped she adds, was the knowledge she gained working in marketing for Dako, a biotech company that develops diagnostics for cancer therapy. *“I already had some opinions about cancer, like if I have it, I want to get rid of it as soon as possible. I want to hit it with everything I can.”*


Proper nutrition and hydration became important goals in Cindy's treatment plan. To ensure the specially designed radiation mask would stay snug and hold her head still, Radiation Oncologist **Dr. Shane Cotter** needed Cindy healthy and maintaining her weight. With a fitted mask, the cancerous areas could be targeted and sensitive structures in her throat could be spared.

Sarah Washburn, MS, RDN, CSO, an oncology nutrition specialist, partnered with Cindy to keep track of critically-needed fluids and calories. She would review Cindy's lab work and visit with her during chemotherapy to make menu suggestions when Cindy's taste buds began to fail. She instructed Cindy on reading food labels and purchasing vitamin drops. When they considered new drink ideas, Cindy's husband, Jeff, and 16 year-old daughter, Layla, would post what they needed on their family's CaringBridge® website, and often friends would deliver it to their front porch.

“Sarah is so knowledgeable,” says Cindy. *“She would listen closely and help*

find me solutions. At the beginning, I didn't realize how important having a nutrition expert was going to be. It was very comforting having somebody watch me carefully and notice when things needed to be adjusted.”

As Cindy neared the completion of her treatment, she and Jeff focused on celebrating the end, eating normal food again and restarting regular dog walks in their neighborhood and on the beach. *“I realize how important health is now and that I do need to keep a healthier lifestyle. I know now that nutrition is a huge part of dealing with cancer and being healthy.”* ■

Nutrition Programs 
853 unique patients received nutrition assistance
The Cancer Foundation contributed \$207,574 for oncology nutrition in 2016.

Wellness Programs 
420 unique patients attended
2,400 total attendees in wellness programs
The Cancer Foundation contributed \$223,143 for wellness programs in 2016.

Cancer Resource Library
890 inquiries made to the Library by physicians, patients and family members in 2016

Navigation Services

1,070 unique patients were assisted by our patient navigation

5,908 patient encounters with patient navigators

Jan Martin Winn works an entire year to prepare for the jewelry party she hosts annually. “It’s my entrepreneurial, creative outlet and it’s fun to make beautiful things,” she says. But on the morning of the 2015 event, she received a phone call about her mammogram results. Before long, she was sitting with **Dr. Fred Kass**. After he said the word “cancer”, everything was a blur. “You’re reeling at that point. You can’t think of the questions to ask. I probably only comprehended 25% of what was said,” she recalls.

The notes from that meeting taken by

breast care navigator **Sam Howland, MS**, helped Jan process and review her diagnosis. The 67 year-old would need to turn her focus from her longtime job managing The Upham Hotel to her battle with HER2 positive breast cancer. Jan decided to work during her treatment, which was challenging but a good distraction. “I didn’t want the hotel operations to fall apart,” she worried. Jan would regularly stop at Sam’s desk to talk about managing her recommended chemotherapy plan: using the medicines Perjeta® and Herceptin to shrink her tumor. “In the beginning,

when everything is foreign and scary and overwhelming, it’s comforting to know that you have that person in your court,” explains Jan. “You do have those dark moments and having a navigator is really critical to getting you through.”

Sam’s wisdom proved even more valuable when Jan weighed whether to undergo just a lumpectomy, or opt for a mastectomy and breast reconstruction. Initially, the latter idea seemed brilliant. “Who wouldn’t want a flat stomach and a perfect chest?” laughs Jan. But when Sam consulted with Radiation Oncologist **Dr. Lindsay Blount**, she discovered that

Jan could not receive necessary radiation after a reconstruction. “She saved the day on that,” says Jan. “I really feel like it would have been a very different outcome without Sam’s help.” With chemotherapy and radiation behind her, Jan is back at her hotel post and planning for her 2017 jewelry party. Her body may still be healing, but her outlook on life is changed. “At first, I didn’t like the word ‘journey’ but there is no better word to describe what all of this is,” Jan explains. “Thank God you have these wonderful people who take care of you and help you with your fears. I just feel so grateful.” ■

“At first, I didn’t like the word ‘journey’ but there is no better word to describe what all of this is.”



Jan Martin Winn



Patient Navigation

Patient Navigation services assist patients on the journey to live with, through and beyond cancer. Our Patient Navigators serve as liaisons between individual patients and various healthcare providers required for proper diagnosis, treatment and disease management.

2016 Highlights

In 2016, Navigators assisted with several initiatives including: completing **204 Survivorship Care Plans** for newly diagnosed breast cancer patients, improving pathways for potentially underserved patients in our community and supporting **Cottage Hospital’s Cancer Program recertification**, as well as **Santa Barbara Breast Care Alliance’s recertification**.

CANCER FOUNDATION
OF SANTA BARBARA

The Cancer Foundation contributed

\$481,438

to support patient navigation in 2016.

Hereditary Cancer Risk and Genetic Counseling



The Genetic Counseling program offers hereditary cancer risk counseling to help patients and families with a history of cancer better understand and manage the risk for developing cancer. Genetic Counselors work closely with oncologists and surgeons regarding the results of genetic testing, which often directly affects the course of treatment or future surveillance for a patient and their family members.

2016 Highlights

In 2016, the Genetic Counseling Program experienced an overall increase in referrals for genetic counseling and testing, which included expanding to provide services for patients at our Solvang office. The department was highly involved in community outreach efforts including leading a multi-disciplinary colon cancer awareness program in March, and continuing the LEAP program, which included five community lectures on genetic counseling.



“It’s amazing that we have this kind of help here. I am really thankful for the Cancer Center.”

Patricia Marek (right) with Danielle Sharaga, MS, LCGC

In the fall of 2016, Patricia Marek’s heart palpitations and hand tremors made her guess she’d be facing a cardiac problem. A long process of tests showed instead that her second cancer had reappeared near her liver and kidney. After successful surgeries to remove the tumors, Patricia’s Medical Oncologist Dr. Julie Taguchi recommended she undergo genetic testing because of a family history of breast and colon cancer. This 70 year-old grandmother had battled breast cancer in her 50s. Five years ago, doctors removed a rare, benign tumor called a pheochromocytoma from her adrenal gland. Patricia learned that genetic screening could shed light on

the recent tumors, and could also reveal whether she, her sons or grandchildren were carriers of a gene that predisposed them to cancer. “I didn’t realize how important it could be to my family,” she explains. “It’s been a real journey learning how it could happen and how I could pass this on.”

Patricia met with Danielle Sharaga, MS, LCGC, a certified genetic counselor, to review her family’s cancer history. Results of a blood test showed she had an inherited gene change that makes it more likely for pheochromocytomas to grow in her body. Danielle and Patricia’s physicians immediately began

investigating all the available research and treatment options for this rare condition. Danielle communicated with the leading researcher on this gene mutation so Patricia could connect with studies or registries of patients who have the same condition. “It’s opened up a whole avenue of information and what that means genetically for me and my children,” says Patricia. “Danielle is so knowledgeable and explains it so well that you kind of stop and think, ‘well, maybe there is a reason why this has all happened.’”

Pheochromocytomas sometimes create certain symptoms in the body that could increase risks for any surgical procedure. If

doctors know a patient has this rare gene mutation, in addition to yearly screenings, they would most likely test before any kind of surgery. This is one compelling reason why Patricia is encouraging her family members to seek genetic counseling for themselves. She describes it as “eye-opening” and says instead of depressing her, it’s empowered her with information on how best to fight the disease. “I know many people may not want to find out if they are a carrier but it’s amazing what they know now and what they can do and what could be done in the future,” she notes. “It’s amazing that we have this kind of help here. I am really thankful for the Cancer Center.” ■

Hereditary Cancer Risk Counseling

609 patients were seen for hereditary cancer risk counseling +14%*

377 pursued genetic testing and follow-up genetic counseling

33 participants were counseled on results ordered by another provider

32 participants were identified with breast cancer gene mutations

11 participants were identified with colorectal cancer gene mutations

*Percentage increase of patients treated from previous year



The Cancer Foundation contributed \$272,787 to support hereditary (genetic) risk counseling in 2016.

Community Engagement

2,531 interactions regarding cancer prevention and education in the community

2,095 adults reached with skin cancer awareness campaign

65 adults attended "Demystifying the Screening Colonoscopy" community awareness event

341 children, teens and young adults in youth oriented cancer prevention and education programs

The Santa Barbara County Promotores speak proudly about their long history of service. More than 15 years ago, three local Latina women with ties to neighborhood clinics conversed about how many in their Hispanic/Latino community lacked healthcare education and access.

"Our job was to get out and talk about services, but at the same time we were hearing about all kinds of real health concerns. We decided we needed to do something about it," says Josefa Rios, a founding Promotores member. All three women endeavored to make a difference by starting small. They volunteered at health fairs and spoke with locals about the importance of caring for their physical and mental well-being. Now, the Santa Barbara County Promotores include more

than 100 advocates to reach every corner of the county, cultivating relationships and listening empathetically to residents about their most basic health-related needs.

The idea of a "promotora" exists nationwide. While most are not healthcare professionals, they do receive extensive training and are a critical link between community members and invaluable resources like the Cancer Center of Santa Barbara, which has been working with the Promotores since their beginning. The Promotores' consistent involvement in their cancer prevention events has resulted in greater attendance and a more strategically-crafted message to the Hispanic/Latino community. This assistance expands way beyond breaking down the language barrier. Volunteers promote Cancer Center-sponsored

screenings for various types of cancer that have included colon, prostate, skin, breast and oral cancer. They enroll participants, disseminate information and answer questions. Their mere presence helps those attending to trust the Cancer Center and its staff, quelling fears for those who are less comfortable discussing medical issues. "The Promotores are a very important partner," explains Lisa Winebrenner, the Cancer Center's Program Manager for Community Outreach. "They validate our credibility and as a result, increase our effectiveness."

Lisa and Josefa have nurtured the relationship between the two organizations over many years. The Santa Barbara Promotores have developed a deep understanding of the beliefs and values within the Spanish-speaking

community. Without this baseline of trust, it's difficult to open up a dialogue on addressing healthcare concerns. "Many are afraid to disclose anything personal," admits Josefa. "It's also a pride issue. We don't want to show weakness. We always put our families before ourselves. And the biggest challenge is the fear of knowing something is wrong."

The Promotores and the Cancer Center are working together to combat that mindset, stressing the importance of early detection and prevention so cancer health disparities in the county can be reduced. Both share a common goal that will undoubtedly continue into the future: to empower individuals and families with dignity and compassion while they navigate the sometimes complicated medical concerns that often arise in our lives. ■



“The Promotores are a very important partner... they validate our credibility and as a result, increase our effectiveness.”

The Santa Barbara County Promotores



Prevention, Education & Outreach

The Cancer Center, in partnership with the Cancer Foundation of Santa Barbara, coordinates community outreach programs and events to improve our community's understanding about the importance of early detection and prevention of cancer, as well as new developments in care, diagnosis and treatment.

2016 Highlights

In 2016, we attracted 65 attendees to "Demystifying the Screening Colonoscopy," a colon cancer screening and education event designed to break down misconceptions about this important test. We continued work with Santa Barbara Neighborhood Clinics and the Santa Barbara County Public Health Department to collaborate towards achieving greater overall cancer screenings and prevention for local residents.

CANCER FOUNDATION
of SANTA BARBARA

The Cancer Foundation contributed

\$80,812

to fund prevention, education, and outreach programs in 2016.

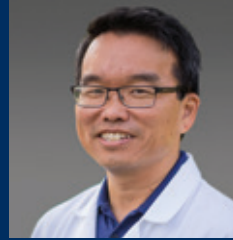
Our Physicians

Radiation Oncology



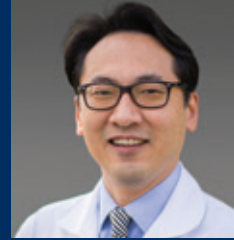
Lindsay Blount, MD

Dr. Blount completed his residency at UCLA's Department of Radiation Oncology after receiving his medical degree from the Medical College of Wisconsin. He then joined the faculty at UCLA as an instructor and Assistant Clinical Professor in Radiation Oncology until his move to the Cancer Center in 1991. Dr. Blount started the Stereotactic Radiosurgery Program at the Cancer Center over 20 years ago. He also has a special interest in prostate cancer, having performed hundreds of prostate seed implants.



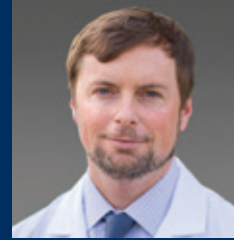
George C. Cheng, MD, PhD

Dr. Cheng completed his medical education and residency at Harvard Medical School where he graduated Summa Cum Laude. Dr. Cheng also completed two fellowships at Harvard: Research Fellow at the Joint Center for Radiation Therapy and Clinical Fellow at Harvard Medical School. He has a strong interest in research and has completed the National Institutes of Health Medical Scientist Training and has received several distinctions for his research. Dr. Cheng has practiced Radiation Oncology at the Cancer Center since 2004.



W. Warren Suh, MD, MPH

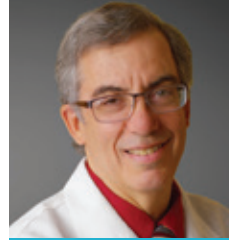
Dr. Suh completed a joint 5-year Medical Degree/ Masters of Public Health in Outcomes Research at the University of Chicago's Pritzker School of Medicine and Harvard University T.H. Chan School of Public Health. He completed his two residency programs: Internal Medicine at Mayo Clinic and Radiation Oncology at the University of Michigan, where he also served as a Chief Resident. Dr. Suh subsequently joined the faculty at Harvard Medical School and Dana-Farber Cancer Institute, and Brigham and Women's Hospital for five years, being promoted from Instructor to Assistant Professor in Radiation Oncology. Dr. Suh joined the Cancer Center in 2009.



Shane Cotter, MD, PhD

Dr. Cotter earned his Doctorate in Molecular and Cellular Biology and his medical degree from Washington University in St. Louis. He completed an internship at Santa Barbara Cottage Hospital and a Radiation Oncology residency at Harvard Medical School where he also served as Chief Resident. Dr. Cotter then joined the faculty at Harvard Medical School and the Dana-Farber Cancer Institute, and Brigham and Women's Hospital as an instructor in Radiation Oncology until his move to the Cancer Center in 2012.

Medical Oncology & Hematology



Mark Abate, MD

Dr. Abate has practiced Medical Oncology & Hematology at Sansum Clinic since 1988. He attended the University of Connecticut's School of Medicine followed by an internship in Internal Medicine at Dartmouth College/ Hitchcock Medical Center. He completed fellowships in Oncology & Hematology at Stanford University and UCLA. He has served as the President of the Department of Internal Medicine at Santa Barbara Cottage Hospital and was a member of the Oncology Advisory Committee for Health Net.



Jonathan Berkowitz, MD, PhD

Dr. Berkowitz joined Sansum Clinic's Medical Oncology & Hematology Oncology Department in 2012. He completed his medical degree at the State University of New York at Buffalo School of Medicine, and residency in Internal Medicine at Mount Sinai School of Medicine in New York, followed by a fellowship in Medical Oncology & Hematology at the National Cancer Institute in Bethesda, Maryland. Dr. Berkowitz has a special interest in neuro-oncology and practices primarily in the Cancer Center's Solvang office.



Mukul Gupta, MD

Dr. Gupta has practiced Medical Oncology & Hematology with Sansum Clinic for twelve years. He completed his medical education at the University of Zambia in southern Africa. His internship in Internal Medicine was at Los Angeles County/ University of Southern California Medical Center, and fellowship in Medical Oncology & Hematology at the University of Southern California. He is an accomplished researcher and in addition to English, he speaks Spanish, Hindi and Nyanja.



Dan Greenwald, MD

Dr. Greenwald joined the Cancer Center in 2007 after completing his medical education, internship, residency and fellowship at Stanford University. He received Cottage Hospital's "Physician of the Year" award in 2013 and "Teacher of the Year" award in 2010. In 2009, he was honored as the "Physician of the Year" by Santa Barbara Visiting Nurse & Hospice Care. He currently serves on the Board of Governors of the alumni association of the Stanford University School of Medicine. He maintains a clinical interest and research focus in the treatment of lymphoma.





Fred Kass, MD

Dr. Kass is a Medical Oncologist and Medical Director of the Cancer Center's Medical Oncology Department. He has practiced medicine since 1985. After receiving his medical education at Tufts University, he completed his internship and residency at Yale New Haven Hospital, followed by an Oncology fellowship at Harvard's Dana-Farber Cancer Institute. Dr. Kass is especially passionate about research, nutrition and supportive care of patients and their families. He is also co-chair of the Cottage Hospital Medical Advisory Panel and is on the Cottage Hospital population health task force.



Ryan F. Kendle, MD

Dr. Kendle is board certified by the American Board of Internal Medicine. He received his medical degree from Drexel University in Philadelphia, PA and completed his Internal Medicine internship and residency at the University of California Davis Medical Center. Dr. Kendle completed his Oncology & Hematology fellowship at UCLA's David Geffen School of Medicine where he was Chief Fellow 2015-2016. Dr. Kendle joined the Cancer Center in 2016.



Novejot K. Sekhon, MD

Dr. Sekhon is board certified by the American Board of Internal Medicine. She received her medical degree from George Washington University School of Medicine and Health Sciences in Washington, D.C. Dr. Sekhon completed her internship and Internal Medicine residency at Thomas Jefferson University Hospital in Philadelphia, PA and was an Oncology & Hematology Fellow at UCLA Olive View Medical Center. Dr. Sekhon joined the Cancer Center in 2016.



Gregg Newman, MD

Dr. Newman has been with Sansum Clinic's Medical Oncology & Hematology Department since 1999 after completing his medical education at Mount Sinai Medical School in New York City, a fellowship at Cornell University and internship at the University of California Davis. Dr. Newman is a principle investigator for research studies for GI and GU cancers and was presented with Visiting Nurse & Hospice Care "Physician of the Year" award in 2010.



Juliet Penn, MD

Dr Penn joined Sansum Clinic's Medical Oncology & Hematology Department in 2015. After pursuing her medical education at Sackler School of Medicine in Tel Aviv she completed an internship at Cottage Hospital, residency in Internal Medicine and Radiology, and fellowship in Hematology and Oncology at University of California Los Angeles. Dr Penn has an interest in breast cancer and strives to focus on patients' physical and emotional healing throughout their cancer treatment.



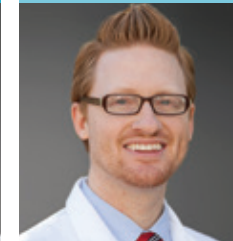
Julie Taguchi, MD

Dr. Taguchi attended the University of Southern California's Keck School of Medicine and graduated Summa Cum Laude and valedictorian of her class at Mount St. Mary's College. She joined Sansum Clinic's Medical Oncology & Hematology Department in 1993 after completing her internship and Hematology fellowship at Kaiser Foundation Hospital in Los Angeles, a Medical Oncology Fellowship at USC, and then two years at City of Hope in the Department of Hematology and Bone Marrow Transplantation. Dr. Taguchi is a firm believer in overall well-being throughout treatment and into survivorship, and she has a special interest in breast care. She is a Clinical Assistant Professor of Medicine at the University of Southern California Keck School of Medicine, has been a Principal Investigator for TORI for 18 years, and has lectured around the world on the topic of hormones and breast cancer.



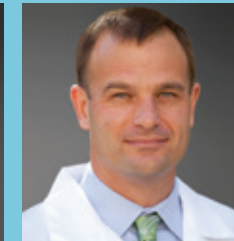
Thomas Woliver, MD

Dr. Woliver has practiced medicine in Santa Barbara since 1983. He completed his medical education at the University of Cincinnati College of Medicine, his residency and internship at Santa Barbara Cottage Hospital and was a fellow at UC San Diego in Oncology & Hematology. Dr. Woliver is certified in Medical Oncology and Internal Medicine by the American Board of Internal Medicine. As a result of his collaborations with Drs. Kass and Greenwald at the Cancer Center, their research has been published in several medical journals. Dr. Woliver was awarded the Preceptorship Award from American College of Physicians for Community-Based Teaching of Medical Students and Residents.



David Carlson, MD

Dr. Carlson is the only Santa Barbara physician expertly trained in both PET and CT. He joined the Cancer Center's Nuclear Medicine Department in 2011. He completed his medical education at the University of Oklahoma, followed by a surgical internship at UCLA, and a three-year nuclear medicine residency at UCSF. As part of a new training pathway in nuclear medicine, his residency included a year of diagnostic CT training. Dr. Carlson then stayed at UCSF for an additional year as a clinical instructor, and completed a fellowship in CT at UCSF. He remains a member of the clinical faculty in the UCSF Department of Radiology and Biomedical Imaging. Having read thousands of PET/CTs and diagnostic CTs during residency and fellowship, he brings an unparalleled level of expertise to the interpretation of fused PET and CT images.



William Pace, MD

Dr. Pace is the Medical Director for the Cancer Center's Nuclear Medicine Department. He attended medical school at the University of Iowa followed by a general surgery internship at Cottage Hospital. He completed his residency at Stanford University, where he also underwent fellowship training in Nuclear Cardiology. He maintains a strong interest in treatment and is among California's most prolific radionuclide therapists. He has been working in Santa Barbara since 2002.

Annual Events 2016



Barbara Ireland Walk for Breast Cancer (March)

The 16th annual **Barbara Ireland Walk & Run for Breast Cancer** raised **\$66,995** in 2016 in support of breast cancer research, genetic counseling and patient navigation services at the Cancer Center. For the fifth year, a kickoff event was held at Dargan's Irish Pub & Restaurant.

Congratulations to **Fitness with Rachel**, who was awarded the Pink Ribbon trophy for being the team that raised the most money for the second year in a row!

This event has raised **\$624,187** since the partnership with the Cancer Center began in 2006.



Tough Enough to Wear Pink Rancheros Ride (May)

Wrangler Jeans and the **Rancheros Visitadores** hosted this colorful event for the fifth consecutive year to raise awareness of breast cancer. In celebration of this year's ride, the club's members contributed a record **\$133,240** to fund research and support programs for breast cancer patients at the Cancer Center of Santa Barbara.

The Rancheros' Tough Enough to Wear Pink event has raised **\$544,376** since its inception in 2012.



Viva La Vida Annual Celebration of Life (June)

Over **1,000** patients, survivors, family members, friends and staff joined us for this free event which honors our community's patients and survivors and coincides with **National Cancer Survivors' Day**.



Cancer Center Walk/Run (October)

The 24th annual **Walk/Run** was an inspirational event raising **\$187,465** in support of the Cancer Center's research and supportive care programs. Congratulations to **#Running for Mama Rosas** on being presented with the largest team award with 47 people, and to **Julie Main's** team for raising the most money – over **\$17,000**.

Julie Main's team earned the prestigious Silver Cup for the second year in a row! This is awarded to the First Place Team - the team that raises the most money in donations, on average, per person. Julie Main's Team raised an average of **\$626** per person. This event has raised **\$3,274,756** since its inception in 1993.



If you are interested in hosting an event to raise money for the Cancer Center of Santa Barbara, please contact us. We would be delighted to assist you in getting publicity and social media to help support your efforts. (805) 898-2116.

Funds Raised by CFSB 2016







Gifts Received

Designation	2016	2015	Difference	%
General Support	\$430,005	\$406,194	\$23,811	6%
Capital Projects/New Cancer Center	\$7,972,408	\$4,434,640	\$3,537,768	80%
Research	\$102,050	\$116,564	(\$14,514)	-12%
Patient Assistance	\$79,092	\$72,006	\$7,086	10%
Endowment	\$269,725	\$1,162,963	(\$893,238)	-77%
Patient Navigation	\$191,424	\$195,100	(\$3,676)	-2%
Oncology Supportive Care/ Genetics/Wellness	\$321,794	\$108,535	\$213,259	196%
Equipment	\$25,845	\$26,715	(\$870)	-3%
Event Sponsors	\$18,525	\$27,695	(\$9,170)	-33%
Other	\$0	\$218,168	(\$218,168)	-100%
TOTAL	\$9,410,867	\$6,768,580	\$2,642,287	+39%

All figures represent funds collected; no pledges.

Grants Made by CFSB 2016

Funds Granted by the Cancer Foundation to Local Organizations

	\$ Provided
 Cancer Center of Santa Barbara with Sansum Clinic	\$2,265,954
 Santa Barbara Neighborhood Clinics - Cancer Prevention & Care Program	\$60,000
 Teddy Bear Cancer Foundation - Family Resource Specialist	\$45,000
 Cottage Health - Clinical Research Coordinator for Pediatric Oncology	\$38,245
 UCSB - Camp Kesem – Summer program for children whose parents have cancer	\$10,000
 UCSB - Research Mentorship Program – UCSB PhD candidates mentor select high-school students on cancer-related research projects	\$10,000

Volunteer Spotlight

Fritz Olenberger

Fritz is a local photographer who has graciously donated his professional talents to the Cancer Center of Santa Barbara for many years. With his wife Gretchen often by his side, Fritz's warm and professional approach brings out the best in his subjects. He has been the primary photographer for the Cancer Center's Annual Report for the past three years (including this one). He has captured stirring images at almost every Cancer Center event over the past five years, and he contributed proceeds from a recent photo exhibit to the Cancer Center. Fritz consistently captures the spirit of the Cancer Center and helps tell the story of our patients, physicians and medical staff. We are honored to have his ongoing support.

Fritz's images can be found in many local publications and his images from around the world have been selected for Google Earth and have had more than one million hits. Fritz is a regular contributor to Santa Barbara's Noozhawk, and is a volunteer photographer for many local organizations including Old Spanish Days, Flamenco Arts Festival, the Spirit of 76 Foundation, Summer Solstice Parade, the Santa Barbara Festival Ballet, World Dance for Humanity and the Santa Barbara Trust for Historic Preservation. To view the wide scope of Fritz's work, visit [www.olenberger.com](http://www olenberger.com).



The Elaine & Edward Stepanek Legacy Society

Stepanek Members as of 5/1/17

Peter & Rebecca Adams
Mr. & Mrs. William H. Allaway*
Mrs. Karine Anderson
Anonymous
Ms. Jeano Bailard*
Mr. & Mrs. William J. Bailey*
Mr.* & Mrs. Eugene C. Baum
Dr. Richard A. Baum
Betsy Bertero*
Mr. D. Craig Bigelow*
Mr. Joe Bleckel
Joanne & Bob Bouslough
Mr. & Mrs. Dean Brown*
Ms. Helen J. Brown
Les & Zora Charles

Mr. John L. Courtois*
Mr. Lloyd E. Cox, Jr.*
Tom & Nancy Crawford
Mr. Michael Daly
Mr. Wallace T. Drew*
Ms. Jan Everote
Janice Bahler Fitzgibbons
Mr.* & Mrs. George C. Goranson
Mr. & Mrs. Ronald Green
Mr. & Mrs. John Haigh*
Ms. Eva P. Harris*
Mr. Byron Haskin*
Ms. Yvonne Baker Heltman
Bob Hodges* & Barbara Burket
Grethe & Henning Jensen

Kenneth & Frances Jewesson
Ms. Alvah M. Kaime*
Mr. & Mrs. Herbert Kendall
Mr. & Mrs. Richard Kickliter
Mr. & Mrs. William Kimsey
Henry & Heidi Kirkwood
Mrs. Gregorio Kogan*
Mr. Otto Korntheuer*
Ms. Mary Ann Kriebel*
Shirley & Seymour Lehrer
Chris & Mark Levine
Mr.* & Mrs. Thomas N. Lewis
Mr.* & Mrs. Jim Lindsey
Julie Lopp
Barbara S. & Robert Stanley MacLean*

Mrs. Kathleen Mayes
Patricia A. McCormack
Mr. & Mrs. Arthur J. Merovick
Mrs. Jane Merovick*
Janet Millar
Gary & Anna Nett
Mr. & Mrs. Joseph G. Noh*
Mr. Austin H. Peck, Jr.*
Barbara Pieters
Mr. Mickey M. Plaut
Cherry Post
Mr. & Mrs. Hal Rich
Ms. Penny Ridgeway*
Mr. & Mrs. William Samson*
Mr. & Mrs. Daniel A. Sattler*

Kathleen D. Schepanovich
Mr. & Mrs. Rick Scott
Mr. & Mrs.* Peter Simeth
Judge & Mrs. C. Douglas Smith*
Mack* & Judy Stanton
Charles & Patricia Stevens*
Mr. Charles Storke*
Dr. & Mrs. H.T. Thoreson
Mr. & Mrs. James A. Tilton
Jean & Davis H. Von Wittenburg
Ms. Jennifer Wells
Mr. Otis Williams*
Ms. Marie A. Wolford*

*deceased

The **Elaine and Edward Stepanek Legacy Society** is named after two of the Cancer Center's most generous benefactors. The Stepanek Legacy Society honors those who have included the Cancer Foundation of Santa Barbara and/or the Cancer Center of Santa Barbara in a planned gift or bequest. Membership is conferred upon those who have communicated to the Cancer Foundation their intention to make a gift through their will, living trust or other planned agreement. Please let us know if you have remembered the Cancer Center in your plans so that we can acknowledge your support, understand your wishes and say thank you.

New Legacy Member Highlight – Patti McCormack

"It all started with a tour of the new Cancer Center. I was so impressed by having comprehensive cancer care under one roof, I knew instantly that this was a place worthy of my support. I have since left my condominium to the Cancer Center in my estate plans to help support this wonderful new facility. Many of my friends and family have had cancer including my mother and sister. I know how difficult it can be – I've seen what it means to have cancer first hand. I've been telling everyone they should get involved with this amazing project." – Patti McCormack



Named Endowment Funds

Nan Cox Endowment for Lung Cancer Research

The **Nan Cox Endowment** was established for lung cancer research protocols performed by the Cancer Center, often in collaboration with other research institutions.

VALUE: \$336,262 (\$16,426 distributed in 2016)

Elvira Broome Doolan Endowment Fund

The **Elvira Broome Doolan Endowment Fund** was established from the estate of **Elvira Broome Doolan** and is restricted for research.

VALUE: \$10,331,165 (\$504,674 distributed in 2016)

Elizabeth McEwen Jacobs Endowment Fund

The **Elizabeth McEwen Jacobs Endowment Fund** is dedicated to medical or scientific research related to genetic cancer, with a primary emphasis on brain cancer.

VALUE: \$155,160 (\$7,573 distributed in 2016)

Julie Main Endowment Fund

The **Julie Main Endowment Fund** was established with proceeds from **The Main Event**, a celebration of Julie's life, and is restricted for wellness exercise programs for patients.

VALUE: \$153,837 (\$6,387 distributed in 2016)

New endowment funds can be established with a gift of \$100,000 or more and can be dedicated to support particular needs.

To learn more, contact **Rob Dunton**, Director of Philanthropy, at (805) 898-3620.

Arthur J. Merovick Endowment for Patient Assistance

To honor Art Merovick's extraordinary contributions to the Cancer Center as its Director of Development for 17 years, the Cancer Center Board of Trustees established the **Arthur J. Merovick Endowment for Patient Assistance** in 2011.

VALUE: \$1,591,572 (\$67,950 distributed in 2016)

Toby Ann Parisse Memorial Education Fund

Richard Parisse and his three children honored their wife and mother, **Toby Ann Parisse**, with a memorial gift dedicated to benefitting the patients at the Cancer Center by funding continuing education for physicians, nurses and staff.

VALUE: \$153,468 (\$6,847 distributed in 2016)

Scott D. Smith Memorial Fund

The **Scott D. Smith Memorial Fund** was established in memory of **Scott Smith** and is restricted for colorectal screening and prevention programs.

VALUE: \$1,687,269 (\$82,422 distributed in 2016)

Thomas H. Weisenburger, MD Fund

The **Thomas H. Weisenburger, MD Fund** was established to recognize **Dr. Weisenburger's** retirement in 2012 after 28 years of service at the Cancer Center of Santa Barbara. Proceeds support the education of medical personnel and the acquisition of radiation oncology equipment.

VALUE: \$248,614 (\$11,168 distributed in 2016) ■

Lifetime Donors

The Cancer Foundation of Santa Barbara is honored to recognize the individuals and organizations whose generous lifetime commitments equal \$100,000 or more.

\$10,000,000 +

Mr. & Mrs. Evans S. Pillsbury*

Lady Leslie Ridley-Tree

\$5,000,000 +

Mr. Elisha Converse*

\$2,500,000 +

Cottage Health
Virgil Elings, PhD**

Beatrice N. Oddy Estate
Samson Charitable Memorial Trust

The Wolf Family Foundation**

\$1,000,000 +

Fenton Davison Trust
Elvira Broome Doolan Unitrust
Mr. & Mrs. James E. Drasdo
Hugh & Hunter Foster Family
Grace Gilleland Estate

Judy & Jeff Henley***
Mr. & Mrs. Morris M. Jurkowitz
Mr. & Mrs. William L. Kimsey
Eralda Kogan Estate and
Charitable Remainder Trust

Dr. Nancy O'Reilly & Daughters
Lauren, Leigh & Ragan**
Harold A. Parma Trust
Sansum Clinic
Santa Barbara Foundation

Maryann Schall***
Elaine F. Stepanek Estate, Trust
and Foundation
Wallis Foundation

\$500,000 +

Anonymous***
Avon Foundation for Women
Mr.* & Mrs. Toshiyuki Baba
Mr. & Mrs. Philip L. Bernstein
Bossé Foundation
Contran Corporation

Lloyd E. Cox Testamentary Trust
Ruby Cudney Trust
Joseph J. Gila Estate
John S. Haigh and Margaret Neil
Haigh Family Trust
Dorothy M. Harchalk Trust

Donald K. Harger Estate
Eva P. Harris Estate
Ann Jackson Family Foundation
Mr. & Mrs. Herbert J. Kendall
Mr. & Mrs. Arthur J. Merovick - The
William Stamps Farish Fund

Mosher Foundation
Outhwaite Charitable Trust
The RoKe Foundation, Inc.
Daniel & Edna Sattler Trust
Mr. & Mrs. Eric F. Schulte

Mr. Thomas Sera*
Mr. & Mrs. P. Gene Smith*
Otis M. Williams Charitable
Annuity Trust
The Wood-Claeysens Foundation

\$250,000 +

Anonymous
Mr. Victor K. Atkins, Jr. &
Ms. Victoria Hartmann
Elisabeth Anne
Bertero Estate

The Bollag Family***
Change a Life Foundation
Cheeryble Foundation
Dako North America, Inc.

Katherine Bullard
Dougherty Trust
Caroline & Albert Gazin
Foundation
Pierre Gilleland Trust

Marie L. Gressel
Living Trust
Elizabeth Bixby
Janeway Foundation
Bruce G. & Marion
Y. Miller Trust

Dorothy A. O'Brien Estate
Austin H. Peck, Jr.
Family Trust
Anna M. Prip Estate
Christian T. Prip Estate

Alison Wrigley Rusack &
Geoffrey Claflin Rusack***
Mr. & Mrs. Kenneth
Stinson
Grace A. Tickner Estate

Alice Tweed Tuohy
Foundation
Williams-Corbett
Foundation

\$100,000 +

Carolyn Margaret
Bedard Estate
Bega - Mr. & Mrs. Larry Routh*
Mr. Gordon M. Booth*
Mr. & Mrs. John C. Bowen* &
the John C. Bowen & Shelby C.
Bowen Charitable Foundation
John Braun Charitable
Annuity Trust
G.L. Bruno Associates
Andrew H. Burnett Foundation
Mrs. Neil F. Campbell*

Cancer Foundation Auxiliary
Mr. Robert J. Christie
City of Hope
Virgil V. Cooper Trust
Gerald O. Cowan Estate
Mrs. Joe B. Cox*
Mr. Gordon B. Crary, Jr.*
Mr. & Mrs. Eugene Davidson*
Ardis H. Dwire Trust
The Erret Fisher Foundation***
Mr. & Mrs. Frank H. Foster

Mr. & Mrs. Daniel H. Gainey
Mr. & Mrs. Howard N. Gilmore
Esther Kiefer Greene
Foundation
Mr. & Mrs. Paul W. Hartloff***
M.P. Hascall Unitrust
Vicki & Bob Hazard
William Randolph Hearst
Foundation
Harry L. Hoskins Trust
Mrs. Jackie Inskeep***

Alvah Kaime Trust
Mr. Michael Klein*
Mr. & Mrs. George Y. Kolva
Arthur & Edith Lenart Trust
Edith M. Leonard Trust
Mr. & Mrs. Fredric J. Lukas***
Magnus Trust
Marianna Bush McComb
Estate
Mr. & Mrs. James G. McFarlane
Mentor Worldwide, LLC

Diana L. Meyers Estate
Mr. & Mrs. Robert K.
Montgomery
The Ogle Family
Charlene J. Page Trust
Mr. Richard F. Parisse & Mrs.
Martha J. Levy
Mr. Alan Parsons & Ms. Lisa
Griffiths
Austin H. Peck, Jr. Family Trust
Mr. & Mrs. Gerry Rubin

Mr. Stewart F. Sexton
The Snider Foundation
Florence & Laurence Spungen
Family Foundation
Ms. Judith A. Stanton
Mr. & Mrs. Warren R. Staley**
Charles A. Storke Trust
Mr.* & Mrs. Selby W. Sullivan
TABASGO Trust
Thurzal Q. Terry Trust
Georgia Lee Thomas Estate

Karl W. Tuttle & Ethelyn T.
Tuttle Trust
Mr. & Mrs. Harold L. Votey, Jr.
Evalyn Wais Trust
Weingart Foundation
Mrs. Alice Willfong*
Wilmington Trust
Harry L. Wolf Estate
Harold L. Wyman Foundation
Mr. & Mrs. Ronald L. Ziegler



\$10,000,000+ Lady Leslie Ridley-Tree

\$5,000,000 - \$9,999,999
Cancer Foundation of Santa Barbara

\$2,500,000 - \$4,999,999

Cottage Health

Virgil Elings, PhD

The Wolf Family Foundation

\$1,000,000 - \$2,499,999

Roger K. Bower
Jim & Wendy Drasdo
Hugh & Hunter Foster Family
Anna & David Grotenhuis

Judy & Jeff Henley
Morrie & Irma Jurkowitz
William & Nancy Kimsey
Shirley & Seymour Lehrer

Lillian Lovelace
Dr. Nancy O'Reilly & Daughters
Lauren, Leigh & Ragan
Sansum Clinic

Maryan Schall
Elaine Stepanek Foundation,
Trust & Estate

\$500,000 - \$999,999

Bossé Foundation
Haigh Estate

Ann Jackson Family
Foundation
Herbert & Elaine Kendall

Lyons Family Foundation
Dale Marquis
Mosher Foundation

The RoKe Foundation
Tippy & Eric Schulte

\$250,000 - \$499,999

Victor Atkins
The Bollag Family

G.L. Bruno Associates
Les & Zora Charles

Harchalk Estate
Outhwaite Foundation

Santa Barbara
Foundation
Ken & Ann Stinson

Williams-Corbett
Foundation
Otis Williams Trust

\$100,000 - \$249,999

Anita & Chris Anderson
Denny & Bitsy Bacon
Leslie & Philip Bernstein
Change A Life Foundation
Dougherty Trust
The Errett Fisher Foundation

The Hunter Foster Family
Felicie & Paul Hartloff
Vicki & Bob Hazard
Joan & Bob Hollman
Jackie Inskip
Kemmerer Foundation

Eralda Kogan Charitable
Remainder Trust
Christy & George Kolva
Fred & Joyce Lukas
Jim & Alicia McFarlane
Susan & William McKinley

Carolyn & Art Merovick
The Merovick Family
(W. S. Farish Fund)
Val & Bob Montgomery
The Ogle Family
Gerry & Barbara Rubin

Alison Wrigley &
Geoffrey Clafin Rusack
Snider Foundation
Mary Lynn & Warren Staley
Judy Stanton
Alice Tweed Tuohy Foundation
Ron & Betty Ziegler

\$50,000 - \$99,999

Hugh & Kelly Boss
James S. Bower Foundation

Tim & Louise Casey
Bob Christie
Dan & Diane Gainey
Howard & Nancy Gilmore

Jim & Chana Jackson
Janeway Foundation
Kenneth & Frances Jewesson
Mithun Foundation

Ron & Susan Morrow
QAD
Bobbie & Eddie Rosenblatt
Selby* & Diane Sullivan

Anne Smith Towbes
Jack Votey

2016 Donor Acknowledgement

Thank you, to each of our 4,300+ donors in 2016 – your support makes a world of difference to our patients.

We have made every effort to represent gifts accurately. We apologize for any errors or omissions and invite you to bring them to our attention by calling (805) 898-2116. Thank you.

Lillian T. Converse \$10,000 +

Mr. & Mrs. Peter D. Adams
Anonymous (3)
Avon Foundation for Women
B & B Foundation
Mrs. Bonnie J. Baas
Mr. Steve Beneto
Don & Susan Bennett Family Fund
Mr. & Mrs. Philip L. Bernstein
Bossé Foundation
James S. Bower Foundation
Mr. & Mrs. Timothy Casey
Ms. Catherine G. Cavaletto
Change a Life Foundation
Cheeryble Foundation
Mr. & Mrs. Alan R. Christ
Mr. & Mrs. C. Michael Cooney
Virgil V. Cooper Trust
Cottage Health
Tom and Nancy Elsaesser Foundation
Ms. Nancy Englander & Mr. Harold M. Williams
Ms. Jan D. Everote & Mr. Robert Claycomb
Mr. & Mrs. David A. Fishman**
Mr. & Mrs. Stanley Fishman**
Florence & Laurence Spungen Family Foundation
Hugh & Hunter Foster Family
Mr. & Mrs. Frank H. Foster
G.L. Bruno Associates
Caroline & Albert Gazin Foundation
Mr. & Mrs. Howard N. Gilmore
Esther Kiefer Greene Foundation
Mr. & Mrs. Robert Gregory
Mr. & Mrs. Joseph S. Hardin, Jr.
Mr. & Mrs. Paul W. Hartloff, Jr.**
Vicki & Bob Hazard
Mr. Stephen T. Hearst
Mr. Bill Hepp
Howe Electric Construction, Inc.
Mrs. Jackie Inskip**
J & J Foundation**
Ann Jackson Family Foundation
Mr. & Mrs. James H. Jackson
Mr. & Mrs. Palmer G. Jackson
Elizabeth Bixby Janeway Foundation
Mr. & Mrs. Kenneth Jewesson
Ms. Gertrude B. Johnson
Mr. & Mrs. T. Dennis Jorgensen
Mr. & Mrs. Morris M. Jurkowitz
Mr. David W. Keller
Mr. & Mrs. Herbert J. Kendall
Mr. Thomas J. Kenny & Ms. Susan McMillan***

Mr. & Mrs. William L. Kimsey
Mrs. Elizabeth W. Leddy
The Lehrer Family Foundation
Mrs. Judy Little
Mr. & Mrs. Fredric J. Lukas**
Mr. & Mrs. James G. McFarlane
Mr. & Mrs. William J. McKinley
Mr. & Mrs. Arthur J. Merovick - The William Stamps Parish Fund
Mr. Gene I. Miller & Ms. Sharyne Merritt
Montecito Bank & Trust
Mr. & Mrs. Robert K. Montgomery
Mr. & Mrs. Joseph R. Morrison
Ronald & Susan Morrow
Mosher Foundation
Mr. Richard J. Nordlund
The Ogle Family
Dr. Nancy D. O'Reilly & Daughters
Lauren, Leigh & Ragan**
Outhwaite Charitable Trust
Mr. & Mrs. James M. Pollak
Mr. H. Smith Richardson, Jr.
Lady Leslie Ridley-Tree
Mr. & Mrs. Richard T. Roney
Rosenblatt Family Foundation**
Mr. & Mrs. Gerry Rubin
Alison Wrigley Rusack & Geoffrey Clafin Rusack**
Daniel & Edna Sattler Trust
Mrs. C. William Schlosser
Mr. & Mrs. Eric F. Schulte
The Sence Foundation
Mr. & Mrs. George W. Serpa**
Mr. & Mrs. James A. Shattuck
Frances V. Smith Trust
The Snider Foundation
Mr. & Mrs. Warren R. Staley**
Ms. Judith A. Stanton
Mr. & Mrs. Rick Stein
Elaine F. Stepanek Foundation
Mr. & Mrs. Kenneth Stinson
Dr. & Mrs. W. Warren Suh
Mr. & Mrs. Francis Sulger
Tarlton and Son Inc.
Mrs. Anne S. Towbes**
The Treitler-Balint Trust
Alice Tweed Tuohy Foundation
Mrs. Polly Turpin
United Way of Santa Barbara County
Mr. & Mrs. Richard B. Welch
Williams-Corbett Foundation
Mr. & Mrs. Richard Wolf**
Wrangler Jeans
Mr. & Mrs. Ronald L. Ziegler

Evans S. Pillsbury \$5,000 +

Agilent Technologies
Anonymous
B.L. Manger Foundation, Inc.**
Mr. Gary L. Bane
Beneflex Insurance Services, Inc.
Dr. & Mrs. Edward E. Birch
Mr. & Mrs. David J. Borgatello
Mr. & Mrs. Peter A. Borneman
Mr. & Mrs. Hugh M. Boss
Canterbury Consulting, Inc.
Mr. & Mrs. David R. Carpenter
Dr. Louise B. Clarke & Dr. John A. Carbon
Mr. & Mrs. Thomas S. Cullen
Ms. Hillary Dixon & Mr. Josh Aller
Mr. & Mrs. James E. Drasdo
Mr. & Mrs. Robert Fead
Four Seasons Biltmore
Mr. George R. Hearst, III
Ms. Martha L. Hickey
Mr. & Mrs. Jeffrey D. Jacobs***
Mr. & Mrs. Todd M. Jones
Mr. & Mrs. Barry Kitnick
Mr. Don K. Louie
Mrs. Kathleen Mayes
Mr. & Mrs. John H. McCarthy
Julie & Steve McGovern***
Mr. & Mrs. Charles Morse***
Julie & Jack* Nadel
Mr. & Mrs. Mike Nissenson**
Old Spanish Days in Santa Barbara, Inc.
Mr. Richard F. Parisse & Mrs. Martha J. Levy
Mr. David W. Rintels & Dr. Victoria Riskin**
Mr. John E. Ritter
Mr. Kurt W. F. Rumens
Mrs. Kate Schepanovich
Ms. Kimberly A. Schizas
Mr. & Mrs. Rick W. Scott
Mr. & Mrs. Ben S. Stefanski
Summerhill Antiques
Mrs. Jean K. Svoboda**
Mrs. Barbara Tozer
Dr. & Mrs. Thomas H. Weisenburger

Founder's Circle \$2,500 +

Mr. Gilbert G. Aguirre
Mr. & Mrs. Joe Allen
Anonymous
Mr. James N. Arabian & Ms. Mary B. Rogers
Ms. Diane Baskin
Mr. & Mrs. Richard A. Berti
Mr. & Mrs. Geoffrey L. Bloomingdale
Boulder Associates, PC
Ms. Marcy Burton
Mr. & Mrs. Reid G. Cederlof
Celgene
Mr. & Mrs. Barton E. Clemens, Jr.
Mr.* & Mrs. Alfred E. Crain
Ms. Lillian Cross-Szymanek
Mr. & Mrs. Richard Drew
Mr. & Mrs. Robert Fead
Mr. & Mrs. Dennis B. Emory
Ms. Katina M. Etsell
Ms. Julie Evans
Ms. Caroline S. Gadsby
Mr. & Mrs. James Gilbert
Ms. Denise Hengels
The Higgins Trapnell Family Foundation
Mr. & Mrs. Henning Jensen
Mr. & Mrs. Sean Johnson**
Mr. & Mrs. Peter Jordano
Mr. & Mrs. Bruce R. Keeler
Mr. & Mrs. John MacFarlane
Mr. & Mrs. John M. McClure
Mr. & Mrs. Timothy E. Metzinger
Mr. & Mrs. Peter R. Miller
Dr. & Mrs. Spencer Nadler
Mr. Duane T. Nordlund
Mr. & Mrs. Eric Onnen
Mr. Jeffrey A. Overeem
Pacific Western Bank
Patagonia
Mr. & Mrs. Richard J. Pearson
Mr. Kenneth A. Pettit
Mr. Stephen P. Sander
Santa Barbara Tennis Club**
Mr. & Mrs. Douglas J. Scalapino
Mr. M. Stanley Schlosser
Dan B. Secord, MD* & Mary E. Secord, PhD
Mr. Peter G. Simeth
Skinner Family Fund
Steele Family Foundation
Stefanie L. Lancaster Charitable Foundation
Mr. Justin D. Steinfeld, PhD

Chairman's Circle \$1,000 +

Ms. Patricia J. Acton
Mr. & Mrs. Ross D. Adams
Mr. & Mrs. Brent R. Anderson
Anonymous (2)
Mr. & Mrs. Ugo P. Arnoldi
Mr. & Mrs. Robin Baggett
Ms. Rona Barrett**
Mr. & Mrs. Robert S. Bennett
Ms. Barbara Benon
Dr. & Mrs. Jonathan Berkowitz
Bickett Family Foundation
Bio SB, Inc.
Mr. & Mrs. John C. Bishop, Jr.
Thomas & Louise Brant Family Fund
Dr. & Mrs. Robert E. Bryant
Ms. Barbara Burket & Mr. Bobby E. Hodges*
The Andrew Busch Family Foundation
Mr. & Mrs. Jack Byers
Mr. & Mrs. Glen Charles
Mr. Ri-Jen Chou
Ms. Heather Clenet
Mr. & Mrs. Kenneth J. Coates**
Combined Jewish Philanthropies
The Condon Family Foundation
Mr. & Mrs. John A. Cowden
Mr. & Mrs. Lue D. Cramblit
The Crary Foundation**
Mr. & Mrs. Roger Craton**
Mr. & Mrs. A. Lawrence Crowe
Mrs. Louis A. de Ponce
Ms. Suzanne G. Dean**
Mrs. Carol Diamond
Col. & Mrs. Clelland R. Downs, Ret.
Ms. Rochelle B. Dube
Ms. Barbara E. Dunaway
Mr. & Mrs. Robert A. Dunton***
Mrs. Margaret P. Earnshaw
Mr. & Mrs. Eldon Edwards
Dr. & Mrs. Norman C. Enriquez**
Mr. Kenneth E. Falstrom
Mr. Sylvester J. Fior
Hon. & Mrs. Paul G. Flynn
Mr. John T. Fodor**
Mr. Carlos Fontes**
Ms. Joanne S. Freeman
Ms. Sheri C. Gardner
Ms. Janet A. Garufis
Ms. Debra P. Geiger & Mr. Eliot Crowley
Mr. & Mrs. John T. Gerig
Mr. Mario M. Gonzales
Mr. & Mrs. George Hagerman

Mr. & Mrs. William T. Hammond
Mr. & Mrs. Chad E. Hine
Amb. & Mrs. Glen A. Holden
Mr. Jerry C. Horan
HUB International
Mr. Derk K. Hunter, Jr.
International Sports Sciences Association
Mrs. Doralee S. Jacobson
Ms. Penny Jenkins & Mr. Gregg Hackethal**
Dr. & Mrs. Karl J. Kassity
Ms. Laurie Kavara
Dr. & Mrs. Charles B. Kaye**
Mrs. Carroll Ketchpel**
Kiefer-Roberts Family Fund
Mr. Gerard Kilgallon
Ms. Sarah Kitson & Mr. Dave Fudurich
Ms. Terry Kleid
Mr. Gary Kravetz
Mrs. Robert W. Kummer
Mr. Don LaForce
Ms. Patricia A. Latham*
Mr. & Mrs. Joel Lopate
Mrs. Ann Lorimer
Mr. & Mrs. Connie D. Lund**
Lyons Family Foundation
Mr. & Mrs. Daniel L. Mairs
Mr. & Mrs. Bob Manger
Mr. & Mrs. Peter Mann
Mr. & Mrs. Calvin D. Marble
Markstein Beverage Co.
Mr. John S. Mason
Mr. & Mrs. James D. McCammon
Mrs. Janet C. Millar
Mr. & Mrs. Alan Miller
Dr. & Mrs. Sanjit K. Mitra
Mon-Nat Foundation
Reverie Moon
NeckKandy
Mr. & Mrs. Gary Nett
New Day Marketing, Ltd.
Mr. & Mrs. Arthur E. Nicholas
Ms. Devon Geiger Nielsen
Mr. & Mrs. Richard Olivas
Ms. Belita Ong & Mr. James G. Auchincloss
Ostermann Construction, Inc.
Mr. & Mrs. Crosby Z. Panoyan***
Mr. & Mrs. Michael Parisse
Mr. & Mrs. Charles Petersen
Mr. Eugene E. Peterson & Mrs. Nancy E. Darrow***
Ms. Cherry S. Post
Mr. & Mrs. Thomas Prendiville
Dr. & Mrs. Kurt N. Ransohoff***

Mr. & Mrs. Daniel F. Reeves, Jr.
Mr. & Mrs. Donald S. Ribble
Amb. & Mrs. Glen A. Holden
Mr. Michael Erickson**
Mr. & Mrs. Page Roos
Mr. Arthur W. Schultz
Mr. & Mrs. George Rusznak**
Mr. & Mrs. Richard L. Scoby
Mr. & Mrs. David Spainhour
Ms. Gail Suttner
Mr. & Mrs. Joseph A. Talarico
Tecolote Research, Inc.
Mr. & Mrs. Robert A. Toledo
The Towbes Group, Inc.
Mrs. Paul H. Turpin
Union Bank
Valley Penning Association
Ms. Sarah Kitson & Mr. Dave Fudurich
Ms. Elizabeth A. Vos
Mr. & Mrs. W. Wright Watling
Mr. William L. Wayne**
Mr. & Mrs. Nicholas N. Weber
Mr. Hank F. Weeks
Mr. & Mrs. Sean Wilder
Mr. & Mrs. Douglas H. Wilson
Mr. Robert H. Winkler & Mr. Ralph A. Quackenbush
Dr. & Mrs. Philip J. Wyatt**
Mr. & Mrs. Dick Zylstra
Mr. Eric Zahm & Mrs. Stacey Geldin

C.P. Dubbs Club \$500 +

Mr. & Mrs. Leo E. Acquistipace
Mr. & Mrs. Kent N. Allebrand
Mr. Robert F. Alsworth
Anonymous (2)
Ms. Patricia Aoyama & Mr. Christopher Kleveland
Mrs. Patricia Azain
American Riviera Bank
Mr. & Mrs. Stephen J. Barnard
Bartlett, Pringle & Wolf, LLP
Dr. Betsy Bates Freed
Mr. & Mrs. Steve J. Bernstein
Mr. & Mrs. Jack Bianchi
Mr. Paul J. Bowron, Jr.
Mrs. Danna Britton
Mr. & Mrs. Jim Brogan
Mr. William L. Brown & Mrs. Helen Ines
Brownstein Hyatt Farber Schreck, LLP
Mrs. Gay Bryant
Mr. & Mrs. Thomas Carey
Mr. & Mrs. John S. Carter



View of new Healing Garden Plaza and new Ridley-Tree Cancer Center (scheduled to open September 2017).

C.P. Dubbs Club continued

Ms. Marie Cattoir
Mr. & Mrs. Michael J. Cavaletto
Ms. Victoria Chasney
Drs. George & Annie Cheng
Mr. & Mrs. Ri-Pen Chou
Mrs. Barbara A. Clark
Mr. Arnold B. Cooper
Mr. & Mrs. Tony Cossa
Cowpoke Foundation
Ms. Gennine D'Ambra
Mr. & Mrs. Richard Danehy, Sr.
Ms. Edith Dartanner
Mr. & Mrs. John Davies
Mr. Glenn R. Davis
Mrs. Gwen T. Dawson
Mr. & Mrs. James D. Dixon
Dykstra Dairy
Mr. & Mrs. Steven Ebbin
Mr. & Mrs. John L. Edgcomb
Mr. & Mrs. Bill Evenden
Mr. & Mrs. Donald M. Eversoll
Fast Response On-Site
Testing, Inc.
FLIR Systems
Mr. Stephen G. Flowers
Mr. Eldon Ford, Jr.
Mr. James D. Freeman
Ms. Mary O. Furner
Ms. Anna Gil
Ms. Marilyn Gilbert**
Mr. & Mrs. Charles E. Gillman
Mr. & Mrs. Ellis Goebel
Mr. & Mrs. John M. Greathouse
Mr. & Mrs. Jack Greenwald
Dorothy M. Harchalk Trust
Mr. & Mrs. H. Douglas Harvey
Mr. & Mrs. Stan Hatch
Mr. & Mrs. James E. Henry
Mr. & Mrs. Montgomery
R. Hester
Mr. Daniel F. Higgins
Ms. Mara E. Hochman & Mr.
William Curran
Mr. Michael Honer
Mr. & Mrs. Robin R. Hunt
Doug Lorch &
Martha Inman Lorch
Mr. & Mrs. David M. Jewell
Mr. Mark Jobe
Johnson & Johnson Family
of Companies
Mr. & Mrs. Brian Johnson
Mr. & Mrs. Robert E. Kendall
Mr. & Mrs. William L. Kilbury
Ms. Kristen Klingbeil-Weis
Mr. Theodore D. Konopisos
Ms. Deborah Kovanda
Mr. & Mrs. Norman Kovanda
Mrs. Marguerite G. Laflamme

Leavens Ranches LLC
Dr. & Mrs. Charles M. Lepkowski
Mrs. Anita M. Lewis
Mr. Mark Linehan
Ms. Carole E. MacElhenny
Mr. Michael MacElhenny
Mrs. Missy G. MacFadyen
Mr. Preston Madden
Mr. Michael D. Main
Mr. & Mrs. Warren E. Manning
Mrs. Rachel McDonald
Mr. & Mrs. Kevin McGibben
Mr. & Mrs. Brian McGrath
Mr. & Mrs. Stephen W. McHugh
Mr. & Mrs. John F. Meaney
Ms. Jennie P. Merovick
Mr. & Mrs. Steven P. Milam
Mr. & Mrs. Chris Mills
Mr. & Mrs. David Mojarro
Mr. & Mrs. John J. Moller
Mr. & Mrs. Craig Mulford
Mr. Lorenzo Munoz Sandoval
Mrs. Brenda Nancarrow
Mr. Sean Nguyen
Mr. Charles E. Noell
Mr. & Mrs. Ronald Novak
Mr. & Mrs. Tom Cusack
Mrs. Kathleen O'Leary
Mr. & Mrs. Desmond O'Neill
Our Lady of Mount Carmel
School 6th Grade
Mr. & Mrs. Pete Overgaag
Judy Patrizzi Pairs Tournament
Mr. William P. Patrizzi
Mr. & Mrs. John A. Patton
Drs. Juliet & Brandon Penn
Mr. & Mrs. Terry J. Perkins
Miss Souksakhone Phonthongsy
Mrs. Charles A. Polster
Mr. & Mrs. Gregory C. Rech
Mr. & Mrs. John T. Reed
Mr. Jim Reinhardson
Mrs. Donald Richling
Mrs. Talli Robinson
Mr. & Mrs. Steve Roth
Mrs. Martha E. Saatjian
Ms. Maria Saavedra
Mr. Ronald W. Sabo
Ms. Annalee Salcedo Power
Mr. & Mrs. Andre M. Saltoun
Santa Barbara Fit Body
Boot Camp
Ms. Billi Saucier
Schaefer Family Foundation
Dr. & Mrs. Stuart D. Segal**
Mr. & Mrs. Melvyn I. Semmel**
Mr. & Mrs. Bruce Silverman
Dr. Robert L. Sinsheimer*
Mr. & Mrs. Joseph R. Skenderian
Mr. Jack E. Smith

Henry Ullmann Club \$250 +

Ablitts Fine Cleaners
Ms. Arlene K. Allen
Mr. Cassius Allison**
Mr. David F. Allred
American Signs California, LLC
Mr. & Mrs. Bill Anderson
Mr. & Mrs. Kurt R. Anker
Anonymous
Ms. Bernadette Bagley
Dr. & Mrs. Dennis H. Baker
Mrs. Lynette M. Baker
Ms. Virginia H. Baker
Mr. Yusuf A. Balogun
Mr. Charles S. Bargiel
Ms. Doris J. Batastini
Mr. & Mrs. Jerry W. Beaver
Mr. Timothy G. Behunin
Dr. & Mrs. Edward S. Bentley
BioScrip**
Mr. & Mrs. Edward Blizzard
Mr. W.H. Bogue
Mr. & Mrs. Marc S. Borowitz -
Rincon Events
Bragg Crane & Rigging
Mr. & Mrs. Robert W. Brown
Mr.* & Mrs. Tom Brown**
Ms. Tami L. Buenik
Mr. Donald F. Burg
Dr. Katherine &
Mr. Karl Burrelsman***
Ms. Christina Cabral
Mr. Eric Cantlay

Mr. Charles W. Cappel
Ms. Michele Carbone
Mr. Chris Casebeer
Mr. & Mrs. Rudolph Castillo, Sr.
Miss Sierra Cavaletto
Ms. Bronwen Chew
Mr. Peter G. Clark
Mr. & Mrs. Neil M. Cline
Mr. & Mrs. Michael J. Colzani
Mr. & Mrs. Carlton D. Conaway
Mr. & Mrs. Brendan Connolly
Dr. Silvia G. Corral
Mr. & Mrs. Ian Cronshaw
Dr. & Mrs. Mark Da Re
Dargan's Irish Pub & Restaurant
Mrs. Wendy Davis
Deckers Brands
Mr. & Mrs. John A. Winkel
Mr. William Wood
Mr. & Mrs. J. Taylor Woodward
Mr. & Mrs. Roy K. Yamauchi
Mr. Charles S. Young
Mr. & Mrs. Albert Zonana

Ms. Gretchen A. Hewlett
Mr. & Mrs. Tom S. Hilzer
Ms. Chris Hollander
Thomas Holt &
Myra Fujimoto-Holt
Mr. & Mrs. Ernest R. Hueter
Mr. Matthew S. Hughes
Ms. Hayley F. Jessup
Mr. & Mrs. Gifford S. Johnson
Ms. Jeanine Johnson-Caloudes
Ms. Lynda B. Joyce
Mr. Jon Kazanjian
Ms. Christine Kelley
Mr. & Mrs. James P. Kennett
Mrs. Vandana Khare
Mr. & Mrs. John C. Kinnear
Mr. Richard M. Kleberg, III
Mr. & Mrs. Leo Kostruba
Mr. Arthur Kozak
Mr. William T. Kyle
Mr. Ken Lagrande
Mr. David A. Lamb
Mr. John B. Lamb
Mrs. Laura Langford
Mr. & Mrs. David V. Larson
Mr.* & Mrs. Frank Lee**
Mr. & Mrs. Neil Levinson
Mr. & Mrs. Steven W. Lew
Mrs. Judy P. Loughrin* **
Ms. Kristi Lupoli
Mr. Mark MacGillvray
Mr. John A. Macker
Madonna Del Grappa Fund
Ms. Claudia Marquez
Ms. Jill Martin
Mr. & Mrs. Thomas Martin
Ms. Elizabeth McGovern
McGowan Guntermann
Mr. Desmond McGuire &
Mrs. Cory Brame
Mr. & Mrs. Gordon D. McKay
Girl Scout Troop 50915
Mr. & Mrs. Richard Glaus
Mr. & Mrs. Rudolf Goldflam
Ms. Samantha Goldstone
Mr. Steven J. Golis
Mr. & Mrs. Donald C. Gordon
Mr. & Mrs. David Green**
Ms. Suzanne Gregory
Mr. & Mrs. Tony Gregory
Mr. Richard Handler
Mr. Leo Hanly
Mr. Joseph Hansberry
Ms. Irene Hanson
Ms. Susan F. Harmon
Mr. & Mrs. Gary Harris
Ms. Dru A. Hartley***
Harvard Investments Inc.
Mr. & Mrs. Thomas Z.
Hayward, Jr.

Mr. Sam Perricone, Jr.
Mr. & Mrs. William A. Perrone
Ms. Nancy A. Peschek
Dr. & Mrs. Joseph C. Peus
Ms. Harriet Pittman
Mr. Richard L. Pool
Mr. & Mrs. Don Pratt
Ms. Kristin Price
Mrs. Elizabeth H. Rand
Mr. & Mrs. Marc Randall
Mr. & Mrs. Robert W. Rau
Raytheon Company
Mr. Daniel J. Reyes
Mr. & Mrs. Joel Rivlin
Mr. Michael F. Rizor
Mr. Paul E. Robillard
Mr. & Mrs. Robert W. Rohe
Mr. James A. Romeo &
Ms. Christine M. D'Arco**
Mr. Scott Romesser
Ms. Marcia J. Rowland
Mr. & Mrs. Richard H. Rowland
Mrs. Conchita Sanchez Ruess
Mr. & Mrs. Royden R. Rutherford
Mr. & Mrs. John H. Sanger
Mr. & Mrs. Sheldon Sanov
Mr. Jon M. Semper
SGH Oakland
Mr. & Mrs. Kenneth P. Slaughter
Ms. Linda J. Snider
Mr. Talik MacGillvray
St. Mark's Episcopal Church
Mr. & Mrs. Dana St. Oegger
Mr. & Mrs. Peter E. Steiner
Ms. Jacqueline J. Stevens
Mr. Spencer Stevens
Ms. Ann M. Sullivan & Mr.
Edward De Caro
Drs. Julie A. Taguchi & Robert
M. Nagy***
Mr. Paul A. Tonkin
Dr. Carrie L. Towbes &
Dr. John Lewis
Drs. Eric & Rachel Trautwein
Triple "D" Dairy and Farming**
Mr. & Mrs. Steven G. Ullman
United Fabricare
University High School
Ms. Chela Valle
Mrs. Agatha M. Van Wingerden
Mr. Jimmie D. Walker
Mr. & Mrs. William H. Werts
Mrs. Carla Whitacre &
Mr. John A. Brady
Mr. & Mrs. Ben Wiener
Mr. Carl Williams
Mr. Paul Wilson
Mr. & Mrs. Scott Wiscomb
Mr. & Mrs. Larry Young

Associates \$100 +

Mr. & Mrs. Stephen L. Abbott
Ms. Sasha Ablitt
Ms. Antoinette Addison
Mr. & Mrs. David Adornetto
Ms. Joyce Adriansen
AGIA Inc.
Ms. Barbara A. Ahlman
Alamo Pintado Equine
Clinic, Inc.
Mr. & Mrs. Eric W. Allday
Ms. Pamela Allman
Mr. & Mrs. Marc R. Amling
Mr. Donald Amsden
Mr. & Mrs. Tom Andaloro
Ms. Jodi Anderson
Mr. Phelps Anderson
Mr. Robert B. Anderson
Mr. Tyler Anderson
Mr. & Mrs. David Andrade
Mrs. Inez Andrade
Mr. Jaime Andrade
Ms. June R. Andron
Andros Family Trust
Mr. Miguel Angeles
Mr. & Mrs. Melvin Angulo
Anonymous (12)
Mr. & Mrs. Mike V. Antle
Ms. Rena Brantley
Mr. & Mrs. James R. Brass
Mrs. Merna Braun
Ms. Elizabeth S. Breen
Ms. Linda M. Broderick
Mr. & Mrs. Greg Brody
Dr. William K. Brokken
Mr. & Mrs. Tom Brooks
Mrs. Melissa Brooks
Ms. Carol Brown
Ms. Clara M. Brown
Mrs. Helen J. Brown
Mr. Markley C. Brown
Ms. Pamela L. Brown
Ms. Patricia Brown
Mr. Ronald A. Brown
Mr. & Mrs. Joel Browning
Dr. Michael Bruce
Ms. Rhonda Bucci
Mr. & Mrs. Philip J. Bugay
Mr. & Mrs. Jon S. Bull
Mr. & Mrs. William A. Bunker
Ms. Jennifer Burback
Mr. Harlan J. Burchardi
Mr. & Mrs. John Burket
Mr. & Mrs. Richard Burket
Ms. Susan K. Burns
Mr. & Mrs. Steven F. Burson
Mr. & Mrs. John M. Bury
Mr. & Mrs. Matt Butcher



The Healing Garden and Plaza as viewed from the 3rd floor infusion bays in the new Ridley-Tree Cancer Center.

Ms. Peggy Martens
Mr. Colby V. Martin
Ms. Ellen Martin
Ms. Josie E. Martin
Ms. Marilyn M. Martin
Mrs. Michele Martin
Ms. Ann Martinov
Mr. & Mrs. Ben J. Mascari
Ms. Michele Mason
Mr. & Mrs. David L. Mastropieri
Mr. George A. Mattos
Mr. & Mrs. Jose F. Mayoral
Mr. John McCarthy
Ms. Peggy McCormick
Ms. Dianne McCullough
Mr. James V. McDonald
Mr. & Mrs. James H. McKenzie**
Mr. David McLaughlin
Mr. & Mrs. Robert C. McLean
Dr. & Mrs. Lowell G. McLellan
Ms. Joanna McPartlin
Mr. & Mrs. Brad McVay
Mrs. Janis S. Meloy
Mr. John C. Menudier
Meridian Group Rem, Inc.
Ms. Marilyn F. Merlo
Ms. Margaret Mesikep
Ms. Marilyn M. Metzner
Mr. Robert J. Meyer
Mr. Peter Meyn
Ms. Gillian Mibus
Ms. Lisa Mihora
Ms. Kirsten Miks
Mr. & Mrs. Douglas R. Milham
Mr. A. E. Miller, Jr.
Mr. David Miller
Mr. & Mrs. Eric Miller
Mr. Larry Miller
Dr. & Mrs. Peter K. Miller
Ms. Terri M. Miller
Mr. & Mrs. Billy Minick
Mireles Automotive**
Mr. & Mrs. Larry D. Mitchell
MNS Engineers
Mr. & Mrs. Tom Modugno
Mr. & Mrs. Richard W. Mokler
Mr. & Mrs. Michael A. Montgomery
Ms. Ann Moore*
Mr. & Mrs. Edwin M. Moore
Mr. & Mrs. Ralph Moore
Mr. & Mrs. Ronald L. Moore
Mr. Martin Morales
Ms. Sally Morehart
Mr. Dave A. Morley
Ms. Linda Morris
Moss Motors
Mr. & Mrs. Michael Mouradian
Mr. James W. Mozley
Mr. & Mrs. Kenneth N. Mueller
Mr. & Mrs. Bob Muller

Ms. Kathryn A. Mullins
Mr. & Mrs. Robert Murphy
Ms. Heather Myman
Ms. Cheri Nagle
Ms. Lynda J. Nahra
Ms. Carol A. Nalevanko
Ms. Janet V. Napier
Mr. G. Rives Neblett
Carol A. Nelson, NP
Ms. Catherine Nelson
Mr. James C. Nelson
Mr. Samuel W. Nevis
Mr. John P. Newton
Ms. Karen Ngo
Ms. Carola Nicholson
Nick's Telecom
Mr. & Mrs. Thomas Niemann
Ms. Dee Nierzwicki
Mr. & Mrs. Michael J. Nino
Mr. & Mrs. Barry Nisen
Dr. & Mrs. Pierre M. Nizet
Mr. & Mrs. James B. North, III
Mr. Stan Nunn
Ms. Sally O'Connor
Ms. Shan O'Brien Goldman
Mr. & Mrs. Kevin T. O'Dea
Mr. & Mrs. Joshua Odell
Mr. & Mrs. Mark O'Donnell
Mr. & Mrs. Carl F. Olenberger
Ms. Michelle Oliner
Mr. & Mrs. Joseph M. Olla
Mr. Jeff Olsen
Mr. Rob Olson
Dr. & Mrs. Robert W. Olson
Mr. & Mrs. Thomas Olson
Mr. & Mrs. Richard O'Mara
Mr. & Mrs. Rod J. Ontjes
Miss Crystal Ophaso
Ms. Maria C. Ordaz
Mr. & Mrs. Michael Orman
Ms. Monica I. Orozco
Mrs. Eleanor M. Orstad
Mr. & Mrs. David L. Ortiz
Mr. Javier Ortiz
Mr. & Mrs. Kenneth C. Ortiz
Mr. & Mrs. John G. Orton
Mrs. Ramona Pacela
Mrs. Ida Paciano
Mr. & Mrs. Michael H. Pahos
Mr. & Mrs. Jeremy D. Paley
Mr. & Mrs. Kenneth Parent
Mr. & Mrs. Edwin J. Parish
Mr. Anthony Park
Mrs. Sheri Parker
Mr. Ian Parkinson
Mr. & Mrs. Kenneth Pasternack
Hon.* & Mrs. James L. Pattillo
Mr. & Mrs. Tony Paulsey
Mr. Jay R. Paxton
Mr. & Mrs. Clinton R. Pearce

Mr. Elijah Pearce
Mrs. Joanne P. Pearson
Mr. Laurence R. Pearson & Ms. Carol Hawkins
Mr. & Mrs. Thomas P. Pecht
Mr. Joe E. Pedigo
Ms. Merrily Peebles
Detlev Peikert
Mr. & Mrs. Russ S. Penniman
Ms. Laurel Perez
Mr. & Mrs. Ruben Perez
Mrs. Jean M. Perloff, Esq.
Mr. & Mrs. John F. Perrizo
Ms. Rosemary K. Peters
Mr. & Mrs. Gene Petersen
Mr. & Mrs. Donald E. Peterson
Mr. & Mrs. Jeffrey Petrini
Mr. Lad Phillips
Dr. Lois Phillips
Ms. Mandy Phillips
Mr. & Mrs. Roger Phillips**
Dr. & Mrs. John H. Phreaner
Mr. Michael Pico
Mr. Richard J. Pierce
Mr. & Mrs. Donald B. Pies
Ms. Meriann Z. Plamondon
Ms. Susan B. Plumer
Miss Elise Poindexter
Mr. & Mrs. James V. Policelli
Mr. & Mrs. Reilly R. Pollard
Ms. Pamela L. Polomski
Mr. & Mrs. James E. Ponchetti Jr.
Ms. Marjorie Popper & Mr. John V. Everts
Mr. & Mrs. Arthur J. Posch
Ms. Marian Posey
Mr. & Mrs. Barry Posner**
Mr. & Mrs. Mel Potter
Mr. & Mrs. Richard Potter
Mr. & Mrs. David D. Powdrell
Mr. & Mrs. Robert E. Power, III
Ms. Christine E. Powers
Mr. Charles W. Pressley, Jr.
Mr. Ernest L. Price
Mrs. Lorraine E. Price
Mr. & Mrs. Robert E. Priest
Mrs. Michelle F. Puailoa
Mr. & Mrs. Jeff A. Pullen
Mr. Steven D. Pulliam
Mrs. Martha S. Purl
Ms. Denise Purrier
The Quadrex Foundation
Mr. Blake Quinn
Ms. Heidi Rabel
Ms. Mirella Ramirez
Ms. Rosalie Ramirez
Mr. Eusebio Ramon
Mr. & Mrs. Harold C. Ramser, Jr.
Mr. & Mrs. Frank M. Ramsey
Mr. Frank Randall

Randolph Electric LLC
Ms. Margaret E. Rankin
Mr. & Mrs. F. Brian Rapp
Ms. Steve Raschke
Mr. & Mrs. Dennis Rasmussen
Mr. R. Wann Rawles & Dr. Judy Lee Rawles
Mr. & Mrs. John C. Reardon
Mr. & Mrs. Larry R. Redfern
Mr. & Mrs. Talmadge L. Reed
Mr. & Mrs. Charles A. Reid
Mr. & Mrs. Shane Stark
Mr. & Ms. Bhrian Resnik
Mr. & Mrs. Robert E. Rex
Mr. & Mrs. M. Eric Rheinschild
Ms. Janine Richard
Ms. Susan C. Richards
Mr. Wayne Richards
Mr. & Mrs. George D. Riemer
Mr. & Mrs. Paul T. Righetti
Ms. Fran P. Rigoli
Mr. J. Kelly Riley
Mr. & Mrs. Clark R. Ritchie
Mr. & Mrs. Larry J. Ritchie
Mr. Kevin J. Roache
Ms. Kathy Robb
Mr. & Mrs. Kit A. Robbins
Mr. & Mrs. Albert Roberta
Mrs. Jan Roberta
Mr. & Mrs. Bert Robinson
Mrs. Suzanne Robinson
Mr. & Mrs. Edward A. Robles
Mr. David J. Rockey
Mr. & Mrs. Jack Roddy
Mrs. Julia M. Rodgers
Ms. Nancy Rodriguez
Mr. & Mrs. Tony Rodriguez
Mr. & Mrs. Thomas Rohrbach
Ms. Maricela Rosas
Miss Alissa Rose
Mr. & Mrs. Scott Roseman
Mr. & Mrs. Lee E. Rosser
Bob & Rana Rottenberg**
Mr. Rod Rottinghaus
Mr. & Mrs. Gerry Routt
Ms. Jan C. Rowe
Mrs. Janet Rowse
RPM Inc.
Mr. & Mrs. Ralph V. Ruegsegger
Ms. Leslie Ruffalo
Ms. Phyllis E. Ruiz
Mr. & Mrs. David Russell
S.P. Rutherford
Mr. Edward T. Ryan, Jr.
Ms. Kitty Ryan
Mr. & Mrs. Gary Saint Denis
Santa Barbara Airbus
Mr. & Mrs. Augustine J. Saragosa
Mrs. Mary Saragosa
Dr. Stuart J. Sato & Ms. Ellen Wall

Mr. Philippe Sautot
Mr. & Mrs. Kenneth I. Saxon
Mr. & Mrs. Howard S. Scar
Mr. Mike Scavone
Richard L. Schall Memorial Fund
Ms. Toni L. Schinnerer
Ms. Karen Schizas
Mr. & Mrs. Otto A. Schleich
Ms. Chelsea Schmid
Ms. Susan S. Schmid
Ms. Michele Schneider
Mr. Rich Schuette
Mrs. Richard H. Schutte
Mr. & Mrs. David Scott
Mr. David J. Scott & Ms. Leslie M. Perry
Mr. & Mrs. David Seehof
Ms. Ashley Self
Ms. Nicola A. Selley
Mr. & Mrs. Beth Sexsmith
Mr. Richard Shaikwitz
Ms. Diana Shak
Mr. Michael L. Shannon
Mr. & Mrs. Kemper Shaw
Ms. Susanna M. Shaw
Ms. Sharon Sheehan Bifano
Dr. & Mrs. Jack Sheen
Mr. Homer G. Sheffield, Jr.
Mr. & Mrs. Karim Sheikh
Ms. Sheri Shields
Ms. Claire Shoemaker
Mrs. Halina W. Silverman
Mr. Gregory M. Simon
Mr. & Mrs. Gary Simonson
Ms. Roma L. Simpson
Mr. & Mrs. M. Robert Sinclair
Ms. Irma A. Singer
Mr. & Mrs. Jack Sinton
Mr. Rush Skakel, II
Mr. & Mrs. Phillip A. Skeen
Mr. & Mrs. James L. Slaten, Jr.
Mr. & Mrs. Ronald R. Slaughterbeck
Mr. Dave Smith
Mrs. Delia A. Smith
Ms. Evelyn Smith
Hobie Smith
Mr. & Mrs. Jay D. Smith
Mrs. Jean Smith
Ms. Pam Smith
Mr. & Mrs. Thomas M. Smith
Ms. Virginia L. Smith
Dr. & Mrs. Hugh Snyder
Ms. Elaine Snyderman
Ms. Christine Sobell
Mr. & Mrs. Jim Sokolove
Mr. & Mrs. Greg Sorenson
Mrs. Alicia E. Sorkin
Ms. Beth Sparkes
Mr. & Mrs. Kevin Spinelli
Starr Companies

Ms. Catherine Stucki
Mr. Philip A. Stein
Ms. Deborah A. Steinhoff
Mr. Vinita C. Steininger
Mr. & Mrs. David Stern
Ms. Delores A. Sternot
Ms. Carol M. Stetson
Mr. & Mrs. Frank T. Stevens
Ms. Kim L. Stevens
Mr. Kenneth Stevenson
Mr. Gary Stiles
Mr. & Mrs. William E. Still
Ms. Robin Storey
Mr. John Storrer
Mrs. Penny B. Strand
Mr. & Mrs. Henry L. Suarez
Ms. Tomoko Sugano
Ms. Pat Swanson
Mr. James R. Sweeney
Mr. & Mrs. John Sweet
Mr. & Mrs. John S. Swift
System High
Mr. & Mrs. Bradley Tackett
Mr. & Mrs. Jack A. Waite
Mr. & Mrs. David C. Tambo
Ms. Yannick Tanguy
Mr. & Mrs. William R. Tanner
Mr. Robert Taridf
Mr. & Mrs. Carmelo Tasca
Mr. & Mrs. Joseph S. Tavarez, Jr.
Mr. James Taylor
Ms. Teri W. Taylor
Mr. Thomas Teicholz & Ms. Amy Rappoport
Mr. & Mrs. Jean Alf Tennant
Ms. Anna Tetherow
Mr. & Mrs. Truett Thach
Mr. & Mrs. Jacques Thiebaud
Mr. Wayne Thiem
Mr. & Mrs. Duncan A. Thomas
Ms. Grace H. Thomas
Mr. Jim Thomas & Ms. Lindy Shelden
Mr. & Mrs. Les Thomas
Mr. & Mrs. John S. Thompson
Ms. Patricia A. Thorn
Mr. & Mrs. Brian B. Tillemans
Mr. Ralph J. Tingle
Mr. & Mrs. Waldo Tobler
Mr. Walter S. Topping
Mr. & Mrs. Joe Tornatore
Mr. & Mrs. Ben Torres
Mr. Edgar Torres
Ms. Gloria Torres
Mr. & Ms. Douglas Totten
Mr. & Mrs. Richard E. Tracey
Mr. & Mrs. John R. Tracy
Mr. & Mrs. Timothy N. Tremblay
Mr. Michael Trice
Mr. Jan E. Trieger

Dr. & Mrs. Vincent C. Tubiolo
Mr. Bowly Twisselman
Mr. Caleb Twisselman
Mr. & Mrs. Steve Twisselman
Mr. & Mrs. George H. Umezawa
Ms. Charlotte Valentine
Mr. Arturo Valle
Mrs. Ernestina Valle
Miss Monica Valle
Mr. Donald Valpredo
Ms. Carol A. Van Fossen Knight & Mr. Timothy J. Knight
Mrs. Clara van Meeuwen
Mr. & Mrs. Jerry C. Van Wingerden
Ms. Priscilla C. Vandenberg
Mr. & Mrs. J. Bernard VanderArk
Ms. Yesenia Vasquez
Ms. Ann E. Veazey
Mr. & Mrs. Don H. Vickers
Mr. Gary D. Villalba
Visalia Livestock Market
Ms. Alyssa Vossler
Mr. Colin Wachsnor
Mr. & Mrs. Jack A. Waite
Mr. Richard S. Walden
Mr. Cy V. Wales
Mr. Raymond Walker
Mr. Eric Wall
Mr. & Mrs. Keith Y. Wang
Sarah U. Washburn, MS, RD, CSO
Mr. Paul Wasko
Mr. & Mrs. William A. Waters
Ms. Betsy B. Watson
Miss Chloe C. Watson
Mr. Gary T. Wayne
Mr. & Mrs. Harold S. Wayne
Mr. & Mrs. Scott D. Weaver
Mr. & Mrs. John P. Webster
Mr. Joseph D. Webster
Mr. William M. Webster
Mrs. Patricia A. Weeks
Ms. Kathleen Weinheimer
Mr. & Mrs. Robert E. Weiss
Mr. Lance P. Welch
Wells Fargo - The Private Bank
Mr. Alain J. Welty
Dr. & Mrs. Fred Werber
Mr. & Mrs. John B. West
Mr. & Mrs. Jeffrey White
Mr. Jerold R. White
Mr. & Mrs. Ronald N. White
Dr. & Mrs. Stewart White
Ms. Winifred White
Mr. & Mrs. Kris Wieland
Ms. Janet Wilcox & Mr. Evan Colavincenzo
Mr. & Mrs. Dan Wiley
Ms. Jodi Williams
Williams Livestock
Mr. & Mrs. Mike V. Williams

Ms. Cheryl Willin
Mr. & Mrs. George T. Willis
Mr. & Mrs. Thomas Willis
Ms. Grace Willson
Mr. & Mrs. John K. Wilson
Mrs. Juliana Wilson
Ms. Karen Wilson
Mrs. Ernestina Valle
Mr. & Mrs. Peter Wilson
Mr. & Mrs. Randall L. Wilson
Windmill Ranch & Vineyard
Ms. Joy H. Winer
Mr. & Mrs. David D. Winters
Mr. & Mrs. William T. Wiswall
Mr. & Mrs. Charles C. Wolfe, III
Women's Athletic Club
Women's Health Services
Mr. & Mrs. Peter Wong
Mr. Chris Wood
Ms. Cristina L. Wood
Mr. David E. Wood
Mr. Michael Wood
Ms. Esther A. Woods & Mr. Frank Gregory
Ms. Marcella J. Woolfolk
Ms. Angela Wormser
Ms. Marylee Wren
Mr. & Mrs. Chris Wright
Mr. Kevin Wright
Mrs. Marsha Wright
Mr. Ralph Wright
Ms. L. Eileen Wu
Mr. Warren Wu
Mr. & Mrs. Henry A. Wunsch
Mr. & Mrs. Donn Wurts
Mrs. Samantha Wynns
Mr. & Mrs. Masen Yaffee
Mr. AJ Yang
Ms. Barbara Yelinek
Ms. Elaine Yen
Sandy & Jean Yen
Mr. Robert C. Yost
Mr. & Mrs. Charles R. Young
Mrs. Susan Young
Mrs. Anne N. Yungling
Mr. & Mrs. Joe Zamora
Mr. & Mrs. Richard R. Zandona
Mr. & Mrs. William F. Zeldis
Ms. Jane Zellers
Dr. & Mrs. Donald C. Ziehl
Mr. & Mrs. Don H. Zimmerman
Ms. Barb Zirretta
Ms. Jane Zonka
Dr. Rebecca Zwick

In Kind

Ablitt's Fine Cleaners
Ms. Thea R. Altman
The Andersens
Ms. Joan Anderson
Anna's Bakery
Ms. Janice Applegate
Aquarium of the Pacific
Arnold's LLC
Artiste Winery
Aveda
The Ballard Inn & Restaurant
Ms. Dee Anne Barker
Ms. Doris J. Batastini
Ms. Recie Bauman
Beachside Bar & Cafe
The Berry Man, Inc.
Blenders In The Grass
Brander Vineyard
Brighton Collectibles
California Pizza Kitchen, Inc.
Mr. Charles W. Cappel
Stephanie & Dana Carlyle
Change a Life Foundation
Chaucer's Books
The Cheshire Cat Inn
Chocolate Maya
Chuck's Waterfront Grill
Circle Bar B Guest Ranch Resort
Mr. & Mrs. Francisco Cong
Cottonwood Canyon Vineyard and Winery
Cox Communications
Crimson Aromatherapy Day Spa & Boutique
Cruz Dance and Entertainment
Dargan's Irish Pub & Restaurant
Ms. Edith Dartanner
Ms. Jeannette L. Day
Ms. Christine Dicey
Edhat
Ms. Tamar Elias
Enjoy Cupcakes
Four Seasons Resort Hualalai
Four Seasons Resort - The Biltmore Santa Barbara
Ms. Barbara Gutmann
Fairview Car Wash
Firestone Vineyard
First United Methodist Church of SB
Fitness with Rachel
Ms. Susie Freese
Gainey Vineyards
The Garden Market
Gazillion Dresses

Giovanni's Pizza
Golf N' Stuff Family Fun Park
The Good Cup
Granada Theatre
Green Star Coffee
Mr. & Mrs. George Hagerman
Halper Fine Art
Mr. Robert Hasley
Ms. Anita Hermalin
Ms. Trenna Hunter
Ice In Paradise
Island Packers
Mr. & Mrs. James H. Jackson
Jeannine's
Joe's Cafe
Jonathan & Sylvia
Jordano's Inc.
Kahuna Grill
Kalyra Winery
Kathy Ireland Worldwide
KEYT
Mr. Philip R. Kirkwood
La Arcada Bistro
The Lark
Lazy Acres Market
Ms. Judith H. Light
Lole Atelier
Lucas & Lewellen Vineyards
Lunchbox
Ms. Lura Bowers
Lure Fishhouse
Mr. Michael Magrill
Malette Family Trust
MarBorg Industries
Max's Restaurant & Cucina
Mr. & Mrs. Arthur J. Merovick
Metropolitan Theatres Corp.
Mrs. Amanda Minsky
Mishay Salon & Spa
Julie & Jack* Nadel
Napoleon Blonde
Natural Cafe
Nectar Eatery & Lounge
Ms. Linda Neutz
Noozhawk
Occhiali Fine Eyewear Salon
Mr. & Mrs. Carl F. Olenberger
Olio E Limone Ristorante
Pacific Beverage Company
Pacific Coast Produce
Pacific Conservatory Theatre
The Painted Cabernet
Panera Bread
Paradise Cafe
Patxi's Pizza
Paul Mitchell Cosmetology Academy

Pier 1
PizzaMan Dan
Price Management
Mr. & Mrs. Jeff A. Pullen
Raw Revolution
Mr. Brian Reischl
Renaud's Patisserie & Bistro
Road ID
Ms. Maxine Robinson
Rusty's Pizza
Sambo's Restaurant
San Ysidro Ranch
Sansum Clinic - Facial Plastic Surgery & Aesthetics
Sansum Clinic Dermatology
Santa Barbara Axxess, LLC
Santa Barbara Bar
Santa Barbara Botanic Garden
Santa Barbara Maritime Museum
Santa Barbara Museum of Art
Santa Barbara Natural History Museum
Santa Barbara News-Press
Santa Barbara Polo & Racquet Club
Santa Barbara Revels
Santa Barbara Winery
Santa Barbara Yoga Center
Ms. Leora Sarachek
SB Youth Music Academy
Jenny Schatzle
Sea Landing
SeaWorld of California
Segway of Santa Barbara
Mrs. Nancy E. Simon
Skate One
Sly's Seafood-Steak-Cocktails
Mr. & Mrs. Tom Smith
South Coast Church
South Coast Karate
Starbucks
Ste. Michelle Wine Estates
Mr. Lyle Stokes
Ms. Kim Summerville
Ms. Betty J. Swain
Sweet Epil
Sysco
Mr. & Mrs. Lawrence E. Thompson
Tre Lune Ristorante
UCSB - Arts & Lectures
The Upham Hotel and Country House
Via Vai Trattoria
The Walking Company
Water Store
Ms. Deborah Watts

In Honor Of

Dr. Mark S. Abate
Isabelle Arias
Anu Atré
Martha Becker
Dr. Jonathan Berkowitz
Richard A. Berti
Jack Bianchi
Marguerite E. Bianchi
Dr. Edward E. Birch
Sue Birch
Dr. Lindsay Blount
Dr. Michael C. Bordofsky
Thad Bower
Jamie Burba
Sylvia Camiel
Cancer Center of Santa Barbara Radiation Therapy Staff
Cancer Foundation of Santa Barbara Staff
Mike Caponi
Veronica Caponi
Stephanie Carlyle
Jesus Castillo
Les Charles
Dr. George Cheng
Tamar Cohen
Cynthia R. Comstock
Lydia S. Delgadillo
Mike DePonce
Barbara E. Dunaway
Rudy L. Escalera
Jill Fonte
Jennifer Fullerton
Nicole Gee
Ivan Girling
Dr. Daniel R. Greenwald
Dr. Mukul Gupta
H. Douglas Harvey
Kelly Hatchett
Jack Hiranandani
Jackie Jones
Dr. Fred Kass
Paula Lilly
Tracey J. Martin
Arthur J. Merovick
Carolyn Merovick
Dr. George N. Messerlian

Patty Moo
Helen Moore
Cathie Nelson
Dr. Gregg Newman
Donna L. Payne
Meriann Z. Plamondon
Dr. David A. Raphael
Lady Leslie Ridley-Tree
Santa Barbara Family YMCA
Kimberly Schizas
Carolyn Scott
Rick Scott
Gary Semerdjian
Monica Semerdjian
Matthew Silverman
Sneh Sinch
Mike Singer
Roberta Singer
Janet Smith
Virginia L. Smith
Fidelis Sumampong
Oliver Sumampong
Sue Suttner
Dr. Julie Taguchi
Donna Talarico
Dr. Thomas H. Weisenburger
Ronald C. Werft
Dr. Craig White
Dr. Tom Woliver
Mona D. Zozos

In Memory Of

Cheryl Ades
Carlos Aguirre
Christine Arabian
Elise Arabian
Jennie Arevalo
Philip J. Badone
Hilda S. Baird
Marcia F. Ball
Millie Barrett
Cindy Beberia
Rita A. Benz
Nelly Berkowitz
Linda M. Betz
Bella Borgen
Lorinda A. Bridge
Mary M. Brown
Esley N. Burr
Graham S. Bury
Claudia Castaneda
Patsy R. Cawelti
Ellen M. Chambers
Sujata R. Chaudhury
George Chladni
Mary Chladni

Kenneth A. Clark
Joyce Collins
Laura J. Creasey
Edward Cuevas, Jr.
Rosemary L. D'Andrea
Wendy Davee
Barbara L. Davis
Carolene M. Davis
Colin Day
Patricia N. Deardorff
Louis A. DePonce, Jr.
A.R. Pete Diamond
Thomas F. Dietrich
Sharon Divorty
Carl Domingo
Armino Domini
Roger A. Dumm
Patricia A. Duncan
Arthur F. Dykeman
Gary Eckert
Florence Elm
Jesse J. Ferguson
Carol Fitzgerald
Frances Ford
Sue Forrest
Joseph Geneau
Jane E. Goffin
Ralph D. Goubeaux
Robert O'Neil Gregory
James S. Griffin
Andrea Gropper
Marilyn J. Hagerty
Doris Hankinson
Allan G. Hanretta
Catherine D. Hayes
Ronald Heavner
Patricia L. Hickey
Bobby E. Hodges
Susan Holmes
Morris E. Horsley
Flora Hsu
Peggy Huang
Norman Iverson
Fuji Iwata
Beth McEwen Jacobs
Bert Jacobson
Richard Jamgochian
Morse K. Jeffers
Karen O. Johnson
Samuel R. Johnson
John O. Kahan
Doris J. Kavara
Andrew Kawiecki
Joseph T. Kerwin
Ashley Kimsey-Wheeler
David King
Stephen King

Olga Kokino
Marie Koutoulas
Mary Lou Kravetz
Christopher La Polla
Jaime Laguetta-Stevens
Thomas H. Leger
Victoria Leger
R. William Leslie
King Lew
Cynthia R. Lewis
Thomas D. Lewis
Hon. Joseph Lodge
Therese Lord
Mike Lorimer
Rose D. Louie
Norma Lytle
Carlos Madrigal
Wesley Mann
Donald R. Manning
Marty L. Mason
John B. McCarthy
Timothy P. McGilben
Carol McGovern
William & Susan McKinley's Mothers
Frances N. Menudier
Deloris A. Mochnick
Edgar R. Mohun
Ray Navarro
Svend Aage Olesen
Nancy Orso
Kathryn Ostermann
Charles Otey
Arthur C. Ottolini
Janet C. Ottolini
Charmee B. Padilla
Gerry Palacio
Monroe Peaston
Steven Peeler
Kristen Perry
Debby Davison Phelps
Carolann R. Phillips
Margaret S. Popper
Jeri Porter
Mary Sue Pouliot
Robert Puddicombe
Linda M. Betz
Virginia Puddicombe
Lynn S. Rabinowitz
Dene Race
John Rardon
Mary T. Reischl
Esther Reyes
Erica N. Reynolds
Donald Richling
Verna Richter
Barbara N. Ritter
Manuel J. Robledo

Mark A. Roegner
David Romani
Darlene A. Rotta
Richard D. Ruiz
Janet Rution
Lloyd Saatjian
Norma Schlosser
William Schlosser
Agnes Scott
Dr. Dan B. Secord
Charlie J. Shapiro
Dennis W. Shaughnessy
Dr. Al Silverman
Peter E. Sjolander
Rose M. Skytt
Frances V. Smith
Frank W. Smith
Richard C. Smith
Frances Snyderman
Ursula Spittler-Behm
John J. Sternot
Mildred Sternot
Hon. Ronald C. Stevens
William & Susan Mckinley's Mothers
Chai-Pill Suh
Agee Sutton
Vern Sutton
Catherine Swain
David Szymanek
Yutaka D. Taguchi
Ruth Talbot
Dr. Mananya Tantiwivat
John R. Tennant
Jean L. Thomson
Albert Torres
Paul Turpin
Gregg R. Tyler
Jula Underwood
Eleanor Van Horn
Shirley M. Varner
William L. Wagner
Sue N. Waite
Cathy Waldron
Dr. Malcolm Weiss
Elizabeth B. Whaley
Paul C. Willis
Dr. David K. Winter
Kurt Wolf
Kay Wood
Robert Wuotila



Naming opportunities still exist in the new Ridley-Tree Cancer Center (opening September 2017) and its Healing Garden (shown here). Call (805) 898-3620 for more information.

Cancer Foundation of Santa Barbara Staff



Rick Scott
President



Rob Dunton
Director of Philanthropy



Stephanie Carlyle
Philanthropy Manager



Lori Willis
Major Gifts Officer



Jenni-Marie Peterson
Administration &
Human Resources



Kaile Katsumoto
Philanthropy Assistant



Cancer Foundation of Santa Barbara Board of Trustees

Frank Foster, Chairman
Hugh M. Boss, Vice Chairman
Gene I. Miller, Treasurer
Arthur J. Merovick, Secretary
Brier Turpin Allebrand
Sue Birch
Les Charles
C. Michael Cooney
Shane Cotter, MD, PhD
David Grotenhuis
Vicki Hazard
Julie Henley
Priscilla Higgins, PhD
James H. Jackson
Fred Kass, MD
Timothy Metzinger
Steve McHugh
Val Montgomery
Charlie Petersen
Joel Rothman, PhD
Kimberly Schizas
Thomas H. Weisenburger, MD, FACR

Cancer Foundation of Santa Barbara Administration

Rick Scott, President
Rob Dunton, Director of Philanthropy
Stephanie Carlyle, Philanthropy Manager
Lori Willis, Major Gifts Officer
Jenni-Marie Peterson, Administration & Human Resources
Ann Moore, Planned Giving Officer*
Kaile Katsumoto, Philanthropy Assistant

Cancer Foundation of Santa Barbara
601 West Junipero Street
Santa Barbara, CA 93105

Sansum Clinic Board of Trustees

Janet A. Garufis, Chair
Ed Rosenblatt, Vice Chair
Michael L. Bernstein, MD
Kenneth Coates
Chris Corpuz
Roger P. Craton
Bret E. Davis, MD
Paul Hartloff
Vicki Hazard
Chuck Kaye
Tom Kenny
Ronald G. Latimer, MD
Julie McGovern
Steve McHugh
James McNamara, MD
Art Merovick
David A. Raphael, MD
George Ruzszak
Beth Vos

Honorary Trustees
Wilton Doane, MD*
J. Thomas Fly
Maryan Schall
William Wayne

Sansum Clinic Oncology Administration

Kurt N. Ransohoff, MD, FACP
CEO and Chief Medical Officer
Chad Hine
Chief Operating Officer
Matthew Kunkel, MHA
Vice President of Oncology
W. Warren Suh, MD, MPH
Medical Director of Radiation Oncology
Fred Kass, MD
Medical Director of Medical Oncology
Gregg Newman, MD
Chair, Oncology Department
William Pace, MD
Medical Director of Nuclear Medicine
Jill R. Fonte, MBA
Public Information Officer and
Director of Marketing
Dru Hartley
Director of Philanthropy
Sansum Clinic
470 South Patterson Avenue
Santa Barbara, CA 93102

*Passed away in 2016

The New Cancer Center Brand

Imagine if you took some of the finest cancer doctors in the nation, gave them a highly skilled and compassionate staff, two Elekta Versa HD linear accelerators (the only location in Central California with two), the most genetic counselors in the region, two national clinical research networks, and housed it all in a new state-of-the-art Cancer Center. **Now open your eyes. It's here.**

The Ridley-Tree Name

There's a reason why we're called the **Ridley-Tree Cancer Center**, and that reason is **Lady Leslie Ridley-Tree**. Lady Ridley-Tree is a tireless supporter of many causes important to our Santa Barbara community. She has put her resources to work to make Santa Barbara a community where every life can be enriched and lived well.

We are proud that our name will be synonymous with hers. And we will work hard to ensure our standards, our caring and our excellence match hers too.

Our Logo

It's a tree. It's a shoot. It symbolizes the start of something strong and beautiful.

A new life. A healthy emergence. Delivered with the warmth and caring of the Ridley-Tree Cancer Center family. ■



**Ridley-Tree
Cancer Center**

Opening September 18, 2017



Cancer Center of Santa Barbara

300 West Pueblo Street
Santa Barbara, California 93105
(805) 682-7300 www.ccsb.org
(805) 898-2116 www.cfsb.org

ADDRESS SERVICE REQUESTED

NON-PROFIT
ORGANIZATION
U.S. POSTAGE
PAID
SANTA BARBARA, CA
PERMIT NO. 367

Focused on Cancer • Centered on You



A partnership of the Cancer Foundation of Santa Barbara and the Cancer Center of Santa Barbara with Sansum Clinic

The **Cancer Foundation of Santa Barbara** and the **Cancer Center of Santa Barbara with Sansum Clinic** work in partnership to deliver exceptional cancer care to everyone in Santa Barbara County regardless of means.

Our combined mission is to provide a comprehensive diagnostic, treatment, prevention and research program that allows cancer patients to receive the highest level of care without having to leave Santa Barbara. To keep the Central Coast on the vanguard of modern cancer care, this partnership invests in cutting-

edge medical equipment, the recruitment of highly trained medical personnel, active participation in clinical research, the integration of oncology services and the thoughtful introduction of promising new methods of treatment.

With your help, we will continue to be the regional resource that the public and medical community can count on for education, prevention and leadership in the field of cancer while providing ongoing support to cancer patients and their families – regardless of means. *Thank you.*



Like our Facebook page
facebook.com/CancerCenterofSantaBarbara



Follow us on Twitter
twitter.com/CancerCenterSB



Watch our latest videos
youtube.com/user/CancerCenterSB



Share with us on Instagram
instagram.com/SansumClinic

The Cancer Foundation of Santa Barbara is a 501(c)(3) non-profit organization.